

CIGWELD

AN ESAB BRAND



100+
YEARS OF
WELDING
INNOVATION

BLUE VENOM

XF320 AC/DC

AC/DC TIG POWER-HOUSE



PRECISION TIG WELDING, BACKED BY THE POWER TO GET THE JOB DONE RIGHT.

RAW POWER. ABSOLUTE PRECISION.

The **BlueVenom XF320 AC/DC SiC** delivers 320 amps of pure TIG power for welders who demand control. With precision-tuned synergic settings, and multiple AC waveforms, you can tackle aluminium with confidence and start laying flawless, showcase-ready beads from the very first strike!

High Frequency Start. No touch. No contamination. No compromise.

Position the torch, press the trigger, and fire a clean, instant arc protecting your tungsten and delivering sharper, cleaner welds every time.

Operating from a **32A factory fitted plug**, 3-phase 400V power supply, the BlueVenom XF320 AC/DC SiC incorporates **Power Factor Correction (PFC)** technology to maximise energy efficiency and maintain consistent output, even when used with extended lead lengths, delivering reliable performance wherever the job demands.

Boasting an **IP23S** rating, the BlueVenom XF320 AC/DC SiC is protected against small debris and light rain, ready for use in industrial and outdoor environments.

DESIGNED AND BUILT FOR HEAVY DUTY WELDING.

The machine that never quits! Featuring an incredible **100% duty cycle** on both TIG and Stick, don't let a machine dictate when you weld and for how long. This impressive duty cycle is only achievable thanks to SiC inverter technology, minimising energy losses and reducing heat generation.

Raising the bar for versatility and performance, the BlueVenom XF320 AC/DC SiC brings together multiple welding processes with advanced functionality to meet the demands of virtually any application. Use AC TIG to weld aluminium with up to **9 different waveforms** (sine, square, triangle). Combine the cleaning power of AC and the penetrating power of DC with Mixed AC+DC TIG mode to **weld thicker aluminium plates**. Select Cold TIG for ultra short pulses to **weld thin delicate plates**. The possibilities are endless with our most advanced welding range.

POWERED BY:



CIGWELD

AN ESAB BRAND



DYNAMIC ARC CONTROL

Dynamic Arc Control continuously monitors and adjusts current in real time to maintain a stable, consistent TIG arc, even as welding conditions vary. By compensating for changes in arc length and torch movement especially in challenging positions it ensures smoother arc performance, precise heat management, and consistently high-quality welds.

STICK with PULSE

The **BlueVenom XF320 AC/DC TIG** continues its value packed offer by including Stick as well as **Stick with Pulse** producing cleaner welds with less spatter due to better arc and heat control – better for vertical or overhead welds (over standard Stick).

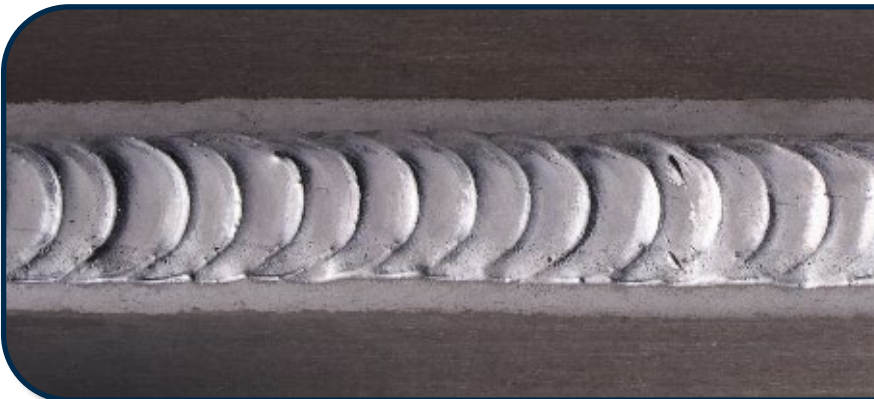
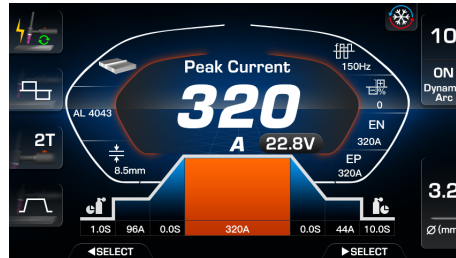
Stick also enables the user to weld where TIG is not feasible i.e: outdoors, no gas availability, remote access, dirtier materials or where a more economical option is required.

EXPANSIVE MEMORY

With an impressive **100x** memory bank, you can save and load job parameters instantly, enabling quick and seamless switching between jobs.

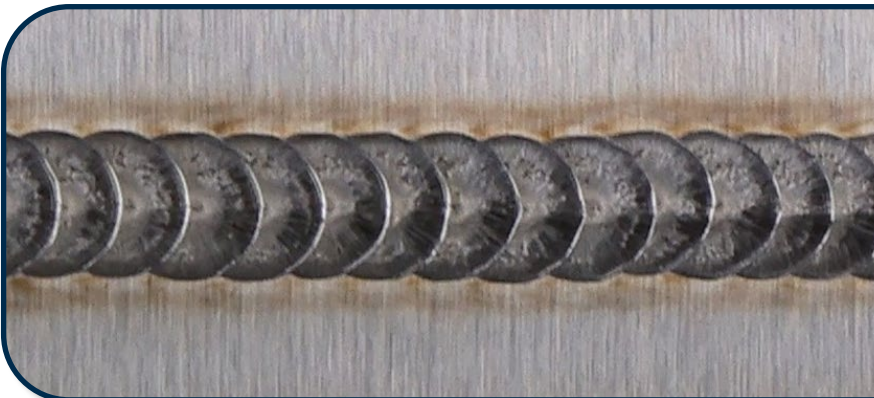
INTUITIVE DISPLAY

Powered by a **5" Full Colour Touch LCD** display, you can access all you need from the 1 screen, allowing you to spend more time welding and less time searching for settings.



Mixed AC+DC TIG

Combine the cleaning power of AC and the penetrating power of DC to weld thicker aluminium plates.



TIG Cold Weld TIG

Ultra-short pulses generate little heat, preventing distortion. Perfect for thin and delicate metals.



Super Pulse TIG

Give a little boost to the start of each pulse. Ideal to get low frequency pulses going

COOLVENOM 7LTR



CoolVenom 7LTR
Water Cooler
(Sold Separately)
P/N: W4018270

TECHNICAL SPECIFICATIONS

Power Supply (Voltage):	Three Phase – 32A Plug 400V +/- 10%
Australian Standard:	AS 60974.1:2020
Nominal Supply Frequency:	50/60Hz
Supply Lead & Plug:	32 Amp (FITTED)
Minimum Generator Required:	16.0 kVA (0.8 Power Factor at Max Amps)
Amperage Range:	TIG: 10A – 320A STICK: 10A – 320A
TIG Duty Cycle @ 40°	320A @ 100%, 22.8V
STICK Duty Cycle @ 40°	320A @ 100%, 32.8V
Voltage Reduction Device VRD:	Yes, on Stick Mode (<35V)
Weight (Power Source):	20kg
Weight (Package):	31.1kg
Dimensions (Power Source) - L x W x H:	660mm x 190mm x 370mm
Dimensions (Package) - L x W x H:	690mm x 380mm x 430mm
Water Cooler Option:	Yes
Protection Class:	IP23S

WARRANTY PERIOD

We stand behind the quality of our products, which is why the BlueVenom XF320 AC/DC SiC comes with a 5-Year Warranty*.

WHAT'S IN THE BOX:

- BlueVenom XF320 AC/DC SiC Power Source
- Dimex Elite 26F, 8m 'Flex Head' TIG Torch with Trigger Button and Remote Current Control
- Fully Equipped with TIG Kits
- 400A Twist lock Electrode Holder with 3m Lead
- 3m Quick Connect Gas Hose
- 300A Earth Clamp with 3m Lead
- BlueJet Regulator/Flowmeter
- Operating Manual

ORDERING DETAILS



BlueVenom
XF320 AC/DC SiC
P/N: W1300320

9 310574 093126 >

*5-Year Warranty applies to power source only. See website for more details.

CIGWELD Info Sheet **BlueVenom XF320 AC/DC SiC V1-2026**
CIGWELD Pty Ltd An ESAB Brand.
cigweld.com.au

