

CIGWELD

AN ESAB BRAND



100+
YEARS OF
WELDING
INNOVATION

BLUE VENOM

XF250 AC/DC

ADVANCED AC/DC TIG WELDER



BUILT FOR TIG PRECISION. ENGINEERED TO DOMINATE.

AC OR DC. TOTAL CONTROL. ZERO COMPROMISE.

The **BlueVenom XF250 AC/DC** is a 250 Amp, high-performance TIG inverter built for welders who demand flawless results. Designed to deliver showcase-quality welds, it features precision-tuned synergic settings and multiple AC waveforms so you can jump straight into aluminium work and start stacking dimes from the first strike!

High Frequency Start. No touch. No contamination.

Position the torch, press the trigger, and fire a clean, instant arc protecting your tungsten and delivering sharper, cleaner welds every time.

Operating from a standard 15A, single-phase 230V power supply, the BlueVenom XF250 AC/DC SiC incorporates **Power Factor Correction (PFC)** technology to maximise energy efficiency and maintain consistent output, even when used with extended lead lengths.

Boasting an **IP23S** rating, the BlueVenom XF250 AC/DC SiC is protected against small debris and light rain, ready for use in industrial and outdoor environments.

PRECISION AC TIG. ABSOLUTE PARAMETER CONTROL.

Effortless control starts with the intuitive **5-inch full-colour touchscreen**, giving instant access to every welding parameter through a clean, streamlined interface. Sync settings to material thickness or take full manual control to fine-tune performance exactly your way.

Raising the bar for versatility and performance, the BlueVenom XF250 AC/DC SiC brings together multiple welding processes with advanced functionality to meet the demands of virtually any application. Use AC TIG to weld aluminium with up to **9 different waveforms** (sine, square, triangle). Combine the cleaning power of AC and the penetrating power of DC with Mixed AC+DC TIG mode to **weld thicker aluminium plates**. Select Cold TIG for ultra short pulses to **weld thin delicate plates**. The possibilities are endless with our most advanced welding range.

POWERED BY:



DYNAMIC ARC CONTROL

Dynamic Arc Control continuously monitors and adjusts current in real time to maintain a stable, consistent TIG arc, even as welding conditions vary. By compensating for changes in arc length and torch movement especially in challenging positions it ensures smoother arc performance, precise heat management, and consistently high-quality welds.

STICK with PULSE

The **BlueVenom XF250 AC/DC TIG** continues its value packed offer by including Stick as well as **Stick with Pulse** producing cleaner welds with less spatter due to better arc and heat control – better for vertical or overhead welds (over standard Stick).

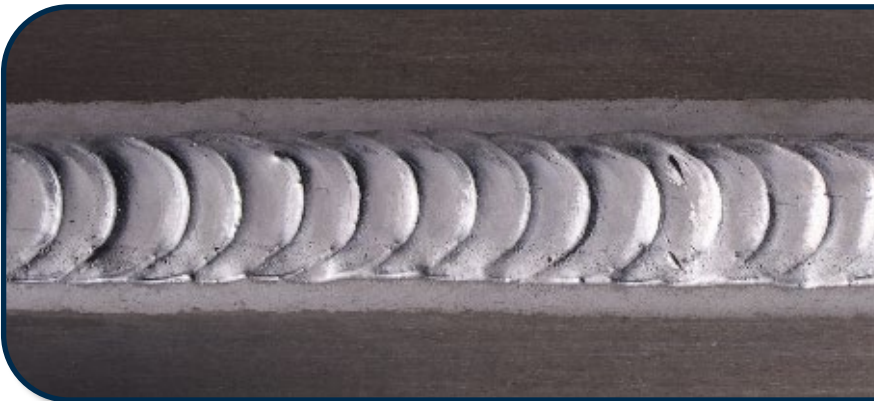
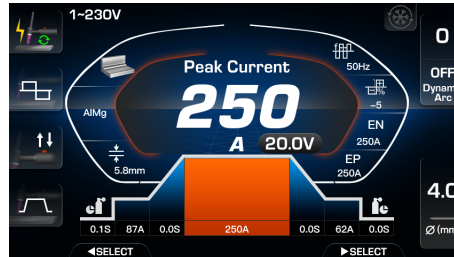
Stick also enables the user to weld where TIG is not feasible i.e: outdoors, no gas availability, remote access, dirtier materials or where a more economical option is required.

EXPANSIVE MEMORY

With an impressive **100x** memory bank, you can save and load job parameters instantly, enabling quick and seamless switching between jobs.

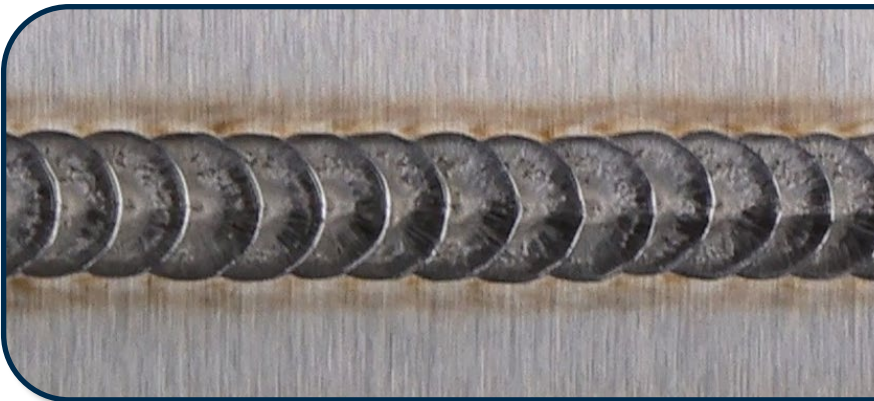
INTUITIVE DISPLAY

Powered by a **5" Full Colour Touch LCD** display, you can access all you need from the 1 screen, allowing you to spend more time welding and less time searching for settings.



Mixed AC+DC TIG

Combine the cleaning power of AC and the penetrating power of DC to weld thicker aluminium plates.



TIG Cold Weld TIG

Ultra-short pulses generate little heat, preventing distortion. Perfect for thin and delicate metals.



Super Pulse TIG

Give a little boost to the start of each pulse. Ideal to get low frequency pulses going

COOLVENOM 4LTR



CoolVenom 4LTR
Water Cooler
(Sold Separately)
P/N: W4018240

TECHNICAL SPECIFICATIONS

Power Supply (Voltage):	Single Phase – 15A Plug 230V +/- 10%
Australian Standard:	AS 60974.1:2020
Nominal Supply Frequency:	50/60Hz
Supply Lead & Plug:	15 Amp
Minimum Generator Required:	8.5 kVA (0.8 Power Factor at Max Amps)
Amperage Range:	TIG: 10A – 250A STICK: 10A – 200A
TIG Duty Cycle @ 40°	250A @ 33%, 20.0V
STICK Duty Cycle @ 40°	200A @ 25%, 28.0V
Voltage Reduction Device VRD:	Yes, on Stick Mode (<35V)
Weight (Power Source):	17.5kg
Weight (Package):	28.8kg
Dimensions (Power Source) - L x W x H:	660mm x 190mm x 370mm
Dimensions (Package) - L x W x H:	690mm x 380mm x 430mm
Water Cooler Option:	Yes
Protection Class:	IP23S

WARRANTY PERIOD

We stand behind the quality of our products, which is why the BlueVenom XF250 AC/DC SiC comes with a 5-Year Warranty*.

WHAT'S IN THE BOX:

- BlueVenom XF250 AC/DC SiC Power Source
- Dimex Elite 26F, 8m 'Flex Head' TIG Torch with Trigger Button and Remote Current Control
- Fully Equipped with TIG Kits
- 250A Twist lock Electrode Holder with 3m Lead
- 3m Quick Connect Gas Hose
- 250A Earth Clamp with 3m Lead
- BlueJet Regulator/Flowmeter
- Operating Manual

ORDERING DETAILS



BlueVenom
XF250 AC/DC SiC
P/N: W1300250

9 310574 093119 >

*5-Year Warranty applies to power source only. See website for more details.

CIGWELD Info Sheet **BlueVenom XF250 AC/DC SiC V1-2026**
CIGWELD Pty Ltd An ESAB Brand.
cigweld.com.au



CIGWELD
AN ESAB BRAND

