

CIGWELD

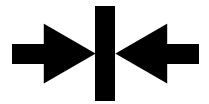
AN **ESAB** BRAND

HandyWeld 130



**“HANDY IN SIZE,
HUGE IN
FEATURES!”**

PLATE THICKNESS



CONTROL

**QUICKSET MIG
MANUAL MIG**

Instagram Facebook LinkedIn YouTube | CIGWELD.COM.AU

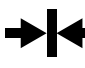
OUTPUT CURRENT
130A
DC

INPUT SUPPLY

230/240V 10A

MIG


DIGITAL PRE-SETS
**QUICK
SET**
MIG

PLATE THICKNESS

CONTROL

WARRANTY*
1
YEAR

HandyWeld 130

The CIGWELD HandyWeld 130 welding machine offers many benefits of a professional welding machine in a compact, portable, easy to use and affordable self-contained single phase welding inverter. With QuickSet Plate Thickness Pre-Sets installed the guess work is now taken out of the set-up, to provide excellent welding results!

- The HandyWeld 130 is the most modern, easy-to-use small inverter MIG Welder designed to take away the guess work when trying to decide what parameters should be set to weld differing thicknesses of metal
- The Electronic QUICKSET provides accurate adjustment of the welding parameters reducing the amount of time wasted in the guessing settings!
- Suitable for MIG with Shielding Gas and MIG Gasless Welding.
- You can weld most metals including Mild Steel, Stainless Steel, Aluminium and Bronze
- CIGWELD have specially configured this machine to be able to produce great welding results from domestic household 230/240V x 10A power
- The HandyWeld 130 machine is ideal for people who want to do light fabrication, car repairs, automotive restorations, maintenance and repairs or DIY around the home, workshop, worksite, or farm, without compromising on quality or safety

BRIGHT BLUE LED DIGITAL METER FOR OUTDOOR USE

FINE TUNING OF PRE-SET WIRE FEED SPEED & VOLTS

MIG GASLESS AND MIG GAS SHIELDED (SOLID)

FACTORY RESET FEATURE

EASY SELECTION! WELDING WIRE SIZE & PLATE THICKNESS

RECOMMENDED WELDING THICKNESS RANGE 0.6mm – 6mm

FULL CONTROL OVER MANUAL SETTINGS

CREEP START FOR SOFT WELD STARTS

FOR GAS AND GASLESS WELDING WIRES

“THERE’S NO HARD IN HANDYWELD”





PLATE THICKNESS, QUICKSET WELDING

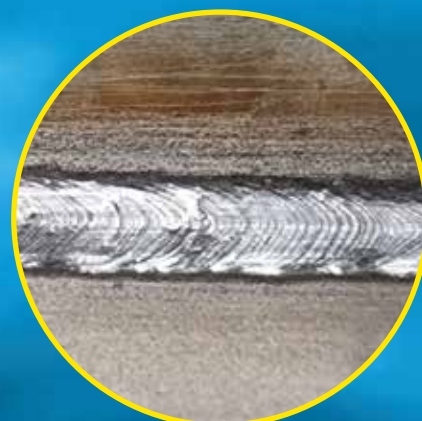
Plate Thickness setting allows you to set up in a flash. There is no guessing the welding parameters. Use the QuickSet feature to set the machine to the correct plate thickness you are welding.



AWESOME OUTPUT FOR A SMALL MIG

The HandyWeld 130 delivers a maximum output of 130Amps DC, which means the machine is capable of welding metals from 0.6mm up to 6mm.

In QuickSet mode the machine is limited to 3mm maximum output. To reach higher thicknesses up to 6mm the machine can be manually adjusted to maximum Wire Feed Speed and Voltage which delivers exceptional welding results on larger metal joints.



VERSATILE

You can weld most metals including Mild Steel, Stainless Steel, Aluminium and Bronze.

As part of our local product development, we rigorously tested the HandyWeld 130 with different metals!

FEATURES



Input Supply
230/240 Volt, 50/60Hz, 10 Amp supply lead fitted to the power source.



Current Range
Current Range for this power source is 30 to 130A. Power source provides DC welding output.



QuickSet
QuickSet pre-sets for simple MIG welding. Determined by wire type, wire diameter and plate thickness.



Digital Meter
Easily view all your important welding parameters including plate thickness and welding Amps at a glance.



No Fuss Settings
Make your job/project easy, QuickSet takes the guess work out of welding.



QuickSet Pre-Sets and Manual Settings
Versatile with factory Pre-Sets and the ability to manually adjust Volts & Wire Feed Speed



Portability
Light weight 7.2kg inverter in a rugged case with carry strap.



MIG (GMAW / FCAW): 130A @ 20%
0.6-0.8mm: Solid MIG wires
0.8-0.9mm Gasless MIG wires
0.8mm: Aluminium MIG wires
0.8mm: Stainless Steel MIG wires.



Plate Thickness
Maximum Plate Thickness up to 6mm, using the machine in manual mode.



Wire Type
Suitable for gas and gasless wires.



Integrated Wire Feed Unit
Suits 100mm spools.



Creep Start
Slow run-in of the wire, to provide smooth weld starts.



Extra Low Current
Ideal for welding thin sheet metal in MIG GAS mode with solid 0.6mm MIG Wire.



Over Temperature Protection
Cut out protection has been fitted to the power source.



Fan Cooled
Keeps the welder running at a higher duty cycle whilst you are welding.



Recommended Generator
6kVA @ 0.8 Power Factor*
*Refer to operating manual for more information.



Compliance
Fully compliant to AS 60974.1:2020
Enclosure rated to IP21S.




1 Year Limited Warranty*
*Refer to operating manual for further details.

QUICKSET IN 3 EASY STEPS!

1

SELECT GAS OR GASLESS WIRE


Press the **SOFT BUTTON**  to select either GAS (SOLID) when using shielding gas, or GASLESS when using Flux Cored Gasless Wire.



2

SELECT THE WIRE SIZE YOU ARE USING

Repeatedly push in the **CONTROL KNOB**  until the WIRE LED is lit.

Turn the **CONTROL KNOB**  to toggle between the 2 wires sizes.



3

DIAL IN THE CORRECT PLATE THICKNESS YOU INTEND TO WELD

Repeatedly push in the **CONTROL KNOB**  until the PLATE LED is lit.

Turn the **CONTROL KNOB**  until the desired metal thickness is showing.



Suitable MIG Wire Sizes: Gasless Wires = 0.8mm or 0.9mm,
Solid Wires = 0.6mm or 0.8mm

SPECIFICATIONS

| | |
|---|--|
| Power Supply (Voltage): | Single-Phase 230V/240V +/-15% |
| Australian Standards: | AS 60974.1:2020 |
| Supply Frequency: | 50/60 Hz |
| Supply Lead and Plug: | 10 Amp |
| Rated Input Current I _{1eff} : | 9.4A – 240V 10A -230V |
| Rated Input Current I _{1max} : | 21A – 240V 22A – 230V |
| Generator Rating: | 6.0 kVA (at 0.8 Power Factor) at Max Amps |
| Amperage Range: | 30 – 130A |

| | |
|----------------------------------|-----------------------|
| Voltage Range: | 15.5 – 20.5V |
| | 130 Amps @ 20% |
| Duty Cycle @ 40°C, 10 minutes | 75 Amps @ 60% |
| | 58 Amps @ 100% |
| Nominal DC Open Circuit Voltage: | 78V |
| Power Source Weight: | 7.2Kg |
| Power Source Dimensions (mm): | L:358 x W:149 x H:273 |
| Package Weight: | 8.6Kg |
| Full Package Dimensions (mm): | L:426 x W:246 x H:337 |
| Protection Class: | IP 21S |

* Refer to operating manual for further details.

** Due to large variations in performance and specifications of different brands and types of generators, CIGWELD cannot guarantee full welding output power or duty cycle on every brand or type generator. CIGWELD recommends that when selecting a generator, the power source/generator combination be adequately trialled to ensure the combination performs to the user's expectations.

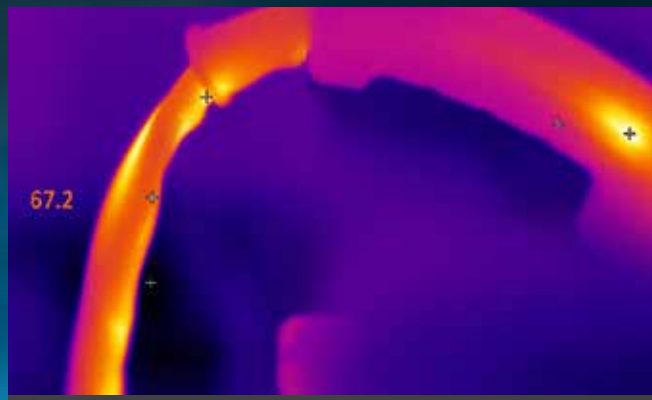
CIGWELD's HandyWeld machines are designed to be technically superior products and are suitable for the serious part-time welding demands. They offer optimum performance, longevity and dependability. Engineered to the highest standards and supported by an extensive warranty, CIGWELD's machines are in it for the long Haul!

PRODUCT TESTING

As part of our product development, CIGWELD rigorously test all the internal components of the welding machine and its external accessories. We make sure that the machines are not just fit for purpose, but will handle tougher than expected working conditions. The below thermal photos are taken ensure no overheating outside of our specified ranges. Additionally, we also conduct weld tests on various common metals, using the expertise of our local technical team ensuring that the settings you use on our machines are tuned to local conditions.



Internal thermal photo of 130 machine during use.



CMG13DL MIG Gun – External thermal photo whilst being used at maximum machine output.

**“QUALITY MIG
GUN SUPPLIED”**



The HandyWeld 130 MIG machine is supplied with a quality MIG Gun rated to handle in excess of the maximum output of the machine.

Model Name: CMG13DL

Replacement Part Number: W52BR13D3

SPARE PARTS & ACCESSORIES

| | |
|---|-----------|
| Feed Roll 0.8-0.9mm U-Groove (soft wires) | W4012904 |
| Feed Roll 0.6-0.8mm V-Groove (hard wires) included with the machine | W4012905 |
| Feed Roll 0.8-0.9mm V-Groove (hard wires) | W4012906 |
| Feed Roll 0.8-0.9mm V Groove Knurled (flux cored/gasless) supplied and fitted on the machine | W4012907 |
| Argon Mini- Regulator and Gas Hose Kit includes CutSkill Regulator/Flowmeter Side Inlet, Gas Hose 2m and Hose Clamp | W4013010 |
| CMG13DL MIG Gun 3m | W52BR13D3 |
| MIG Front-End Kit Box BZL-14 LH, Spare Tips, Nozzles & MIG Pliers etc | W4012302 |
| WeldSkill Welding Equipment Trolley | W4011501 |
| WeldSkill Heavy Duty Welding Gloves - Medium | 646766 |
| WeldSkill Heavy Duty Welding Gloves - Large | 646755 |
| WeldSkill Heavy Duty Welding Gloves - XL | 646767 |
| WeldSkill Welding Jacket - Medium | 646771 |
| WeldSkill Welding Jacket - Large | 646772 |
| WeldSkill Welding Jacket - XL | 646773 |
| WeldSkill Welding Jacket - XXL | 646774 |

WEAR PARTS & FILLER METALS

| | |
|---|------------|
| Gas Nozzle | W6000600 |
| Contact Tip 0.6mm | OTW11/23/R |
| Contact Tip 0.8mm | OTW11/30/R |
| Contact Tip 0.9mm | OTW11/35/R |
| Contact Tip 1.0mm | OTW11/40/R |
| Contact Tip 1.2mm | OTW11/45/R |
| Gas Diffuser (suits CMG13DL) | W6000605 |
| WeldSkill Solid Steel MIG Wire 0.6mm x 0.9Kg | WS0906 |
| WeldSkill Solid Steel MIG Wire 0.8mm x 0.9Kg | WS0908 |
| WeldSkill Gasless Steel MIG Wire 0.8mm x 0.9Kg | WG0908 |
| WeldSkill Gasless Steel MIG Wire 0.9mm x 0.9Kg | WG0909 |
| Autocraft 316LSi Solid Stainless Steel MIG Wire 0.8mm x 1Kg | 721285 |
| Autocraft AL5356 Solid Aluminium MIG Wire 0.8mm x 0.5Kg | 721221 |
| Autocraft AL5356 Solid Aluminium MIG Wire 0.9mm x 0.5Kg | 721223 |



Argon Mini-Regulator and Gas Hose Kit
Part Number: W4013010

CIGWELD

AN ESAB BRAND

HandyWeld 130

ORDERING INFORMATION

HANDYWELD 130 QUICKSET MIG WELDER

W1200130

PACKAGE CONTENTS

HandyWeld 130 Power Source

CMG13DL MIG Gun 2m- Hardwired

Work Clamp with 2.0m Lead

2 x Feed Rolls: 0.8/0.9mm Gasless (Fitted), 0.6/0.8mm Solid Wires

Contact Tips: 0.6mm, 0.8mm (Fitted), 0.9mm

Shoulder Strap

Operating Manual

Operating Manual can be downloaded at cigweld.com.au/manuals



CIGWELD Pty Ltd An ESAB Brand 71 Gower Street, Preston VIC 3072 Australia
Customer Care: Tel: 1300 654 674, Fax: 03 9474 7391, Email: enquiries@cigweld.com.au
International Enquiries: Tel: +61 3 9474 7508 Fax: +61 3 9474 7488



CIGWELD.COM.AU

WE RECOMMEND GENUINE CIGWELD PRODUCTS

BIGGEST RANGE, BEST QUALITY & GUARANTEED PERFORMANCE



In the interest of continuous improvements, CIGWELD Pty Ltd ABN 56 007 226 815 (An ESAB Brand) reserves the right to change specifications or design on any of its products without prior notice.