

CIGWELD

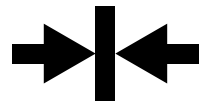
AN **ESAB** BRAND

EasyWeld 130



“ THINK MIG WELDING
IS HARD TO SET?
NOT ANYMORE! ”

PLATE THICKNESS



CONTROL

QUICKSET MIG
MANUAL MIG

📷 📱 📺 | CIGWELD.COM.AU

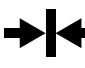
OUTPUT CURRENT
130A
DC

INPUT SUPPLY

230/240V 10A

MIG


DIGITAL PRE-SETS
**QUICK
SET**
MIG

PLATE THICKNESS

CONTROL

WARRANTY*
1
YEAR

EasyWeld 130

The CIGWELD EasyWeld 130 MIG welder offers many benefits of a powerful and professional welder. It is a compact, portable and easy to use self-contained single phase welding inverter. With QuickSet Plate Thickness Pre-Sets, the guess work is taken out of the set-up, to allow excellent welding results!

- The EasyWeld 130 is the most modern, easy-to-use small inverter MIG Welder designed to take away the guess work when trying to decide what parameters should be set to weld differing thicknesses of metal
- The Electronic QuickSet provides accurate adjustment of the welding parameters reducing the amount of time wasted in the guessing settings!
- Suitable for MIG with Shielding Gas and MIG Gasless Welding.
- You can weld most metals including Mild Steel, Stainless Steel, Aluminium and Bronze
- CIGWELD have specially configured this machine to be able to produce great welding results from domestic household 230/240V x 10A power
- The EasyWeld 130 machine is ideal for people who want to do light fabrication, car repairs, automotive restorations, maintenance and repairs or DIY around the home, workshop, worksite, or farm, without compromising on quality or safety

BRIGHT BLUE LED DIGITAL METER FOR OUTDOOR USE

FINE TUNING OF PRE-SET WIRE FEED SPEED & VOLTS

MIG GASLESS AND MIG GAS SHIELDED (SOLID)

FACTORY RESET FEATURE

EASY SELECTION! WELDING WIRE SIZE & PLATE THICKNESS

RECOMMENDED WELDING THICKNESS RANGE
0.6mm – 6mm

FULL CONTROL OVER MANUAL SETTINGS

CREEP START FOR SOFT WELD STARTS

FOR GAS AND GASLESS WELDING WIRES

**“EASY TO USE,
EASY TO SET!”**





QUICKSET YOUR PLATE THICKNESS AND WELD AWAY

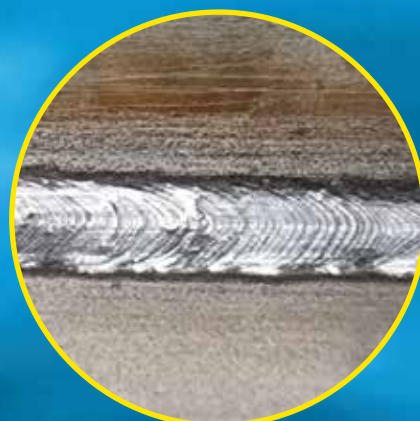
Plate Thickness setting allows you to set up in no time. There is no guessing the welding parameters. The QuickSet feature enables you to set the plate thickness you are welding.



AWESOME OUTPUT FOR A SMALL MIG

The EasyWeld 130 delivers a maximum output of 130Amps DC, and welds metals from 0.6mm up to 6mm.

In QuickSet mode the EasyWeld 130 is limited to 3mm thickness. To weld higher thicknesses up to 6mm, settings can be manually adjusted to maximum Wire Feed Speed and Voltage which delivers exceptional welding results on larger metal joints.



VERSATILE

You can weld most metals including Mild Steel, Stainless Steel, Aluminium and Bronze.

As part of our local product development, we rigorously tested the EasyWeld 130 with different metals!

FEATURES



Input Supply
230/240 Volt, 50/60Hz, 10 Amp supply lead fitted to the power source.



Current Range
Current Range for this power source is 30 to 130A. Power source provides DC welding output.



QuickSet
QuickSet pre-sets for simple MIG welding. Determined by wire type, wire diameter and plate thickness.



Digital Meter
Easily view all your important welding parameters including Plate Thickness and welding Amps at a glance.



No Fuss Settings
Make your job/project easy, QuickSet takes the guess work out of welding.



QuickSet Pre-Sets and Manual Settings
Versatile with factory Pre-Sets and the ability to manually adjust Volts & Wire Feed Speed.



Portability
Light weight 7.2kg inverter in a rugged case with carry strap.



MIG (GMAW / FCAW): 130A @ 20%
0.6-0.8mm: Solid MIG wires
0.8-0.9mm Gasless MIG wires
0.8mm: Aluminium MIG wires
0.8mm: Stainless Steel MIG wires.



Plate Thickness
Maximum Plate Thickness up to 6mm, using the machine in manual mode.



Wire Type
Suitable for gas and gasless wires.



Integrated Wire Feed Unit
Suits 100mm spools.



Creep Start
Slow run-in of the wire, to provide smooth weld starts.



Extra Low Current
Ideal for welding thin sheet metal in MIG GAS mode with solid 0.6mm MIG Wire.



Over Temperature Protection
Cut out protection has been fitted to the power source.



Fan Cooled
Keeps the welder running at a higher duty cycle whilst you are welding.



Recommended Generator
6kVA @ 0.8 Power Factor*
*Refer to operating manual for more information.



Compliance
Fully compliant to AS 60974.1:2020
Enclosure rated to IP21S.




1 Year Limited Warranty*
*Refer to operating manual for further details.

QUICKSET IN 3 EASY STEPS!

1

SELECT GAS OR GASLESS WIRE


Press the **SOFT BUTTON**  to select either GAS (SOLID) when using shielding gas, or GASLESS when using Flux Cored Gasless Wire.



2

SELECT THE WIRE SIZE YOU ARE USING

Repeatedly push in the **CONTROL KNOB**  until the WIRE LED is lit.

Turn the **CONTROL KNOB**  to toggle between the 2 wires sizes.



3

DIAL IN THE CORRECT PLATE THICKNESS YOU INTEND TO WELD

Repeatedly push in the **CONTROL KNOB**  until the PLATE LED is lit.

Turn the **CONTROL KNOB**  until the desired metal thickness is showing.



Suitable MIG Wire Sizes: Gasless Wires = 0.8mm or 0.9mm,
Solid Wires = 0.6mm or 0.8mm

SPECIFICATIONS

Power Supply (Voltage):	Single-Phase 230V/240V +/-15%	Voltage Range:	15.5 – 20.5V
Australian Standards:	AS 60974.1:2020		130 Amps @ 20%
Supply Frequency:	50/60 Hz	Duty Cycle @ 40°C, 10 minutes	75 Amps @ 60%
Supply Lead and Plug:	10 Amp		58 Amps @ 100%
Rated Input Current I _{1eff} :	9.4A – 240V 10A -230V	Nominal DC Open Circuit Voltage:	78V
Rated Input Current I _{1max} :	21A – 240V 22A – 230V	Power Source Weight:	7.6Kg
Generator Rating:	6.0 kVA (at 0.8 Power Factor) at Max Amps	Power Source Dimensions (mm):	L:358 x W:149 x H:273
Amperage Range:	30 – 130A	Package Weight:	9.1Kg
		Full Package Dimensions (mm):	L:426 x W:246 x H:337
		Protection Class:	IP 21S

* Refer to operating manual for further details.

** Due to large variations in performance and specifications of different brands and types of generators, CIGWELD cannot guarantee full welding output power or duty cycle on every brand or type generator. CIGWELD recommends that when selecting a generator, the power source/generator combination be adequately trialled to ensure the combination performs to the user's expectations.

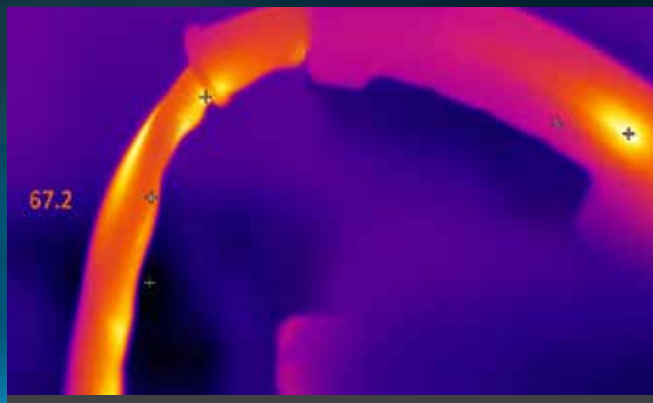
CIGWELD's EasyWeld machines are designed to be technically superior products and are suitable for the serious part-time welding demands. They offer optimum performance, longevity and dependability. Engineered to the highest standards and supported by an extensive warranty, CIGWELD's machines are in it for the long Haul!

PRODUCT TESTING

As part of our product development, CIGWELD rigorously test all the internal components of the welding machine and its external accessories. We make sure that the machines are not just fit for purpose, but will handle tougher than expected working conditions. The below thermal photos are taken ensure no overheating outside of our specified ranges. Additionally, we also conduct weld tests on various common metals, using the expertise of our local technical team ensuring that the settings you use on our machines are tuned to local conditions.



Internal thermal photo of 130 machine during use.



CMG13DL MIG Gun – External thermal photo whilst being used at maximum machine output.

**“QUALITY MIG
GUN SUPPLIED”**



The EasyWeld 130 MIG machine is supplied with a quality MIG Gun rated to handle in excess of the maximum output of the machine.

Model Name: CMG13DL

Replacement Part Number: W52BR13D3

SPARE PARTS & ACCESSORIES

Feed Roll 0.8-0.9mm U-Groove (soft wires)	W4012904
Feed Roll 0.6-0.8mm V-Groove (hard wires) included with the machine	W4012905
Feed Roll 0.8-0.9mm V-Groove (hard wires)	W4012906
Feed Roll 0.8-0.9mm V Groove Knurled (flux cored/gasless) supplied and fitted on the machine	W4012907
Argon Mini- Regulator and Gas Hose Kit includes CutSkill Regulator/Flowmeter Side Inlet, Gas Hose 2m and Hose Clamp	W4013010
CMG13DL MIG Gun 3m	W52BR13D3
MIG Front-End Kit Box BZL-14 LH, Spare Tips, Nozzles & MIG Pliers etc	W4012302
WeldSkill Welding Equipment Trolley	W4011501
WeldSkill Heavy Duty Welding Gloves - Medium	646766
WeldSkill Heavy Duty Welding Gloves - Large	646755
WeldSkill Heavy Duty Welding Gloves - XL	646767
WeldSkill Welding Jacket - Medium	646771
WeldSkill Welding Jacket - Large	646772
WeldSkill Welding Jacket - XL	646773
WeldSkill Welding Jacket - XXL	646774

WEAR PARTS & FILLER METALS

Gas Nozzle	W6000600
Contact Tip 0.6mm	OTW11/23/R
Contact Tip 0.8mm	OTW11/30/R
Contact Tip 0.9mm	OTW11/35/R
Contact Tip 1.0mm	OTW11/40/R
Contact Tip 1.2mm	OTW11/45/R
Gas Diffuser (suits CMG13DL)	W6000605
WeldSkill Solid Steel MIG Wire 0.6mm x 0.9Kg	WS0906
WeldSkill Solid Steel MIG Wire 0.8mm x 0.9Kg	WS0908
WeldSkill Gasless Steel MIG Wire 0.8mm x 0.9Kg	WG0908
WeldSkill Gasless Steel MIG Wire 0.9mm x 0.9Kg	WG0909
Autocraft 316LSi Solid Stainless Steel MIG Wire 0.8mm x 1Kg	721285
Autocraft AL5356 Solid Aluminium MIG Wire 0.8mm x 0.5Kg	721221
Autocraft AL5356 Solid Aluminium MIG Wire 0.9mm x 0.5Kg	721223



Argon Mini-Regulator and Gas Hose Kit
Part Number: W4013010

CIGWELD

AN ESAB BRAND

EasyWeld 130

ORDERING INFORMATION

EASYWELD 130 QUICKSET MIG WELDER

W1201130

PACKAGE CONTENTS

EasyWeld 130 Power Source

CMG13DL MIG Gun 3m- Hardwired

Work Clamp with 2.5m Lead

2 x Feed Rolls: 0.8/0.9mm Gasless (Fitted), 0.6/0.8mm Solid Wires

Contact Tips: 0.6mm, 0.8mm (Fitted), 0.9mm

Shoulder Strap

Operating Manual

Operating Manual can be downloaded at cigweld.com.au/manuals



CIGWELD Pty Ltd An ESAB Brand 71 Gower Street, Preston VIC 3072 Australia
Customer Care: Tel: 1300 654 674, Fax: 03 9474 7391, Email: enquiries@cigweld.com.au
International Enquiries: Tel: +61 3 9474 7508 Fax: +61 3 9474 7488



CIGWELD.COM.AU

In the interest of continuous improvements, CIGWELD Pty Ltd ABN 56 007 226 815 (An ESAB Brand) reserves the right to change specifications or design on any of its products without prior notice.

WE RECOMMEND GENUINE CIGWELD PRODUCTS

BIGGEST RANGE, BEST QUALITY & GUARANTEED PERFORMANCE

