

CIGWELD

AN ESAB BRAND



TOUGH
TESTED IN
AUSTRALIA

BIGSUCKER FX ONE / FX TWO



BigSucker FX1



BigSucker FX2



OPERATING MANUAL

BigSucker FX1, P/N: 455FX01
BigSucker FX2, P/N: 455FX02

230V 10A
FX1

400V 20A
FX2

AUTO FILTER
DUSTING

1 YEAR*
WARRANTY

CIGWELD

AN ESAB BRAND

WE APPRECIATE YOUR BUSINESS!

Congratulations on your new CIGWELD product. We are proud to have you as our customer and will strive to provide you with the best service and reliability in the industry. This product is backed by our extensive warranty and world-wide service network.

This Operating Manual has been designed to instruct you on the correct use and operation of your CIGWELD product. Your satisfaction with this product and its safe operation is our ultimate concern. Therefore please take the time to read the entire manual, especially the Safety Precautions. They will help you to avoid potential hazards that may exist when working with this product.

We have made every effort to provide you with accurate instructions, drawings, and photographs of the product(s) while writing this manual. However errors do occur and we apologize if there are any contained in this manual.

Due to our constant effort to bring you the best products, we may make an improvement that does not get reflected in the manual. If you are ever in doubt about what you see or read in this manual with the product you received, then check for a newer version of the manual on our website or contact our customer support for assistance.

YOU ARE IN GOOD COMPANY!

The Brand of Choice for Contractors and Fabricators Worldwide.

CIGWELD is a Market Leading Brand of Arc Welding Products for ESAB. We are a mainline supplier to major welding industry sectors in the Asia Pacific and emerging global markets including; Manufacturing, Construction, Mining, Automotive, Engineering, Rural and DIY.

We distinguish ourselves from our competition through market-leading, dependable products that have stood the test of time. We pride ourselves on technical innovation, competitive prices, excellent delivery, superior customer service and technical support, together with excellence in sales and marketing expertise.

Above all, we are committed to develop technologically advanced products to achieve a safer working environment for industry operators.



**TOUGH
TESTED IN
AUSTRALIA**



WARNING

Read and understand this entire Manual and your employer's safety practices before installing, operating, or servicing the equipment. While the information contained in this Manual represents the Manufacturer's best judgement, the Manufacturer assumes no liability for its use. Disclaimer: The images and values depicted in this manual are for illustration purposes only and may vary to actual values.

CIGWELD BigSucker OPERATING MANUAL NUMBER 458204 FOR:

FX1 - P/N: 455FX01

FX2 - P/N: 455FX02

Published by:



**CIGWELD Pty Ltd
CIGWELD An ESAB Brand**

71 Gower Street, Preston VIC 3072 Australia

CUSTOMER CARE:

Tel: 1300 654 674 | Intl Tel: +61 3 9474 7400

Email: enquiries@cigweld.com.au

 | CIGWELD.COM.AU

© Copyright 2025 CIGWELD Pty Ltd
All rights reserved.

Reproduction of this work, in whole or in part, without written permission of the publisher is prohibited.

The publisher does not assume and hereby disclaims any liability to any party for any loss or damage caused by any error or omission in this Manual, whether such error results from negligence, accident, or any other cause.

Revision Date: 24/04/2025

RECORD THE FOLLOWING INFORMATION FOR WARRANTY PURPOSES:

Where Purchased:

Purchase Date:

Equipment Serial #:

BE SURE THIS INFORMATION REACHES THE OPERATOR. YOU CAN GET EXTRA COPIES FOR FREE BY DOWNLOADING FROM THE CIGWELD WEBSITE.



CAUTION

These INSTRUCTIONS are for experienced operators. If you are not fully familiar with the principles of operation and safe practices for arc welding and cutting equipment, we urge you to read our booklet, "Precautions and Safe Practices for Arc Welding, Cutting, and Gouging," Booklet U-5407. Do NOT permit untrained persons to install, operate, or maintain this equipment. Do NOT attempt to install or operate this equipment until you have read and fully understand these instructions. If you do not fully understand these instructions, contact your supplier for further information. Be sure to read the Safety Precautions before installing or operating this equipment.

USER RESPONSIBILITY

This equipment will perform in conformity with the description thereof contained in this manual and accompanying labels and/or inserts when installed, operated, maintained and repaired in accordance with the instructions provided. This equipment must be checked periodically. Malfunctioning or poorly maintained equipment should not be used. Parts that are broken, missing, worn, distorted or contaminated should be replaced immediately. Should such repair or replacement become necessary, the manufacturer recommends that a telephone or written request for service advice be made to the Authorized Distributor from whom it was purchased.

This equipment or any of its parts should not be altered without the prior written approval of the manufacturer. The user of this equipment shall have the sole responsibility for any malfunction which results from improper use, faulty maintenance, damage, improper repair or alteration by anyone other than the manufacturer or a service facility designated by the manufacturer.



READ AND UNDERSTAND THE OPERATING MANUAL BEFORE INSTALLING OR OPERATING. PROTECT YOURSELF AND OTHERS!

CIGWELD

AN ESAB BRAND

DECLARATION OF CONFORMITY

According to AS/NZS 3820:2020, Essential Safety Requirements for Electrical Equipment Radiocommunications Labelling (Electromagnetic Compatibility) Notice 2017

TYPE OF EQUIPMENT

Fume Extraction unit

TYPE DESIGNATION

BigSucker FX1 from serial number DD250430XXX

BigSucker FX2 from serial number LTY250430XXX

BRAND NAME OR TRADEMARK

CIGWELD

MANUFACTURER OR AUTHORISED REPRESENTATIVE:

CIGWELD Pty Ltd 71 Gower Street
Preston, Victoria, Australia, 3072
Phone: +61 3 9474 7400;
www.cigweld.com.au

THE FOLLOWING HAS BEEN USED IN THE DESIGN:

- EN 61000-6-2:2019** Electromagnetic compatibility (EMC) - Part 6-2: Generic standards - Immunity standard for industrial environments
- EN 61000-6-4:2019** Electromagnetic compatibility (EMC) - Part 6-4: Generic standards - Emission standard for industrial environments
- EN 12100:2010** Safety of machinery — General principles for design — Risk assessment and risk reduction
- EN 60204-1:2018** Safety of machinery - Electrical equipment of machines - Part 1: General requirements
- IEC 60034-1:2022** Rotating electrical machines - Part 1: Rating and performance

ADDITIONAL INFORMATION:

Restrictive use, Class A equipment, intended for use in location other than residential. This equipment is also in compliance with the essential requirements of EU Directives 2014/30/EU and 2014/35/EU.

BY SIGNING THIS DOCUMENT, THE UNDERSIGNED DECLARES AS MANUFACTURER, OR THE MANUFACTURER'S AUTHORISED REPRESENTATIVE, THAT THE EQUIPMENT IN QUESTION COMPLIES WITH THE SAFETY REQUIREMENTS STATED ABOVE.

PLACE/DATE

Preston
2025-24-04

SIGNATURE

Jarrod Brennan
Managing Director

TABLE OF CONTENTS

SECTION 1:

SAFETY 7

1.01	MEANING OF SYMBOLS	7
1.02	SAFETY PRECAUTIONS	7

SECTION 2:

INTRODUCTION 10

2.01	EQUIPMENT	10
------	-----------	----

SECTION 3:

TECHNICAL DATA 11

SECTION 4:

ASSEMBLY AND COMMISSIONING 12

4.01	PACKAGE CONTENTS	12
4.02	INITIAL CHECKS	12
4.03	FUME EXTRACTOR ARM INSTALLATION	12
4.04	POWER-UP	13
4.05	AUTO FILTER DUSTING	13

SECTION 5:

OPERATION 14

5.01	SET-UP	14
5.02	DIRECTIONS FOR USE	14

SECTION 6:

MAINTENANCE 15

6.01	FILTER CARTRIDGE CLEANING	16
6.02	CLEANING OF THE DUST DRAWER	16
6.03	CHANGING THE FILTER CARTRIDGE	17

SECTION 7:

ORDERING INFORMATION 18

SECTION 1: SAFETY

1.01 MEANING OF SYMBOLS

As used throughout this manual: Means Attention! Be Alert!



DANGER

Means immediate hazards which, if not avoided, will result in immediate, serious injury or loss of life.



WARNING

Means potential hazards which could result in personal injury or loss of life.



CAUTION

Means hazards which could result in minor personal injury.



WARNING

Before use, read and understand the instruction manual and follow all labels, employer's safety practices and Safety Data Sheets (SDSs).

1.02 SAFETY PRECAUTIONS

Users of Cigweld equipment have the ultimate responsibility for ensuring that anyone who works on or near the equipment observes all the relevant safety precautions. Safety precautions must meet the requirements that apply to this type of equipment. The following recommendations should be observed in addition to the standard regulations that apply to the workplace.

All work must be carried out by trained personnel well-acquainted with the operation of the equipment. Incorrect operation of the equipment may lead to hazardous situations which can result in injury to the operator and damage to the equipment.

- Anyone who uses the equipment must be familiar with:
 - Its operation.
 - Location of emergency stops.
 - Its function.
 - Relevant safety precautions.
- The operator must ensure that:
 - No unauthorized person is stationed within the working area of the equipment when it is started up.
 - No-one is unprotected when the arc or work is started with the equipment.
- The workplace must:
 - Be suitable for the purpose.
 - Be free from drafts.
- Personal safety equipment:
 - Always wear recommended personal safety equipment, such as safety glasses, flame-proof clothing, safety gloves.
 - Do not wear loose-fitting items, such as scarves, bracelets, rings, etc., which could become trapped or cause burns.
- General precautions:
 - Make sure the return cable is connected securely.
 - Work on high voltage equipment may only be carried out by a qualified electrician.
 - Appropriate fire extinguishing equipment must be clearly marked and close at hand.
 - Lubrication and maintenance must not be carried out on the equipment during operation.

ELECTRIC SHOCK



WARNING
ELECTRIC SHOCK can kill.

1. Install and ground the unit in accordance with instruction manual.
2. Do not touch live electrical parts or electrodes with bare skin, wet gloves or wet clothing.
3. Insulate yourself from work and ground.
4. Ensure your working position is safe.

ELECTRIC AND MAGNETIC FIELDS



WARNING
ELECTRIC AND MAGNETIC FIELDS can be dangerous to health.

1. Welders having pacemakers should consult their physician before welding. EMF may interfere with some pacemakers.
2. Exposure to EMF may have other unknown health effects.
3. Welders should use the following procedures to minimize exposure to EMF:
 - Route the electrode and work cables together on the same side of your body. Secure them with tape when possible. Do not place your body between the torch and work cables. Never coil the torch or work cable around your body. Keep welding power source and cables as far away from your body as possible.
 - Connect the work cable to the workpiece as close as possible to the area being welded.

FUMES AND GASES



WARNING
FUMES AND GASES can be dangerous to health.

1. Keep your head out of the fumes.
2. Use ventilation, extraction at the arc, or both, to take fumes and gases away from your breathing zone and the general area.

ARC RAYS



WARNING
ARC RAYS can injure eyes and burn skin.

1. Protect your eyes and body. Use the correct welding screen and filter lens and wear protective clothing.
2. Protect bystanders with suitable screens or curtains.

NOISE



WARNING
EXCESSIVE NOISE can damage hearing.

Protect your ears. Use earmuffs or other hearing protection.

MOVING PARTS



WARNING
MOVING PARTS can cause injury.

1. Keep all doors, panels and covers closed and securely in place. Have only qualified people remove covers for maintenance and troubleshooting as necessary. Reinstall panels or covers and close doors when service is finished and before starting engine.
2. Stop engine before installing or connecting unit.
3. Keep hands, hair, loose clothing and tools away from moving parts.

FIRE HAZARD



WARNING
MOVING PARTS can cause injury.

1. Sparks (spatter) can cause fire. Make sure that there are no inflammable materials nearby.
2. Do not use on closed containers.

HOT SURFACE



WARNING
HOT SURFACE parts can burn.

1. Do not touch parts bare handed.
2. Allow cooling period before working on equipment.
3. To handle hot parts, use proper tools and/or insulated welding gloves to prevent burns.



WARNING
MALFUNCTION - Call for expert assistance in the event of malfunction.

PROTECT YOURSELF AND OTHERS!



CAUTION
This product is solely intended for arc welding.



WARNING
Do not use the power source for thawing frozen pipes.



CAUTION
Class A equipment is not intended for use in residential locations where the electrical power is provided by the public low-voltage supply system. There may be potential difficulties in ensuring electromagnetic compatibility of class A equipment in those locations, due to conducted as well as radiated disturbances.



NOTE
Dispose of electronic equipment at the recycling facility.

In observance of European Directive 2012/19/EC on Waste Electrical and Electronic Equipment and its implementation in accordance with national law, electrical and/or electronic equipment that has reached the end of its life must be disposed of at a recycling facility.

As the person responsible for the equipment, it is your responsibility to obtain information on approved collection stations.

For further information contact the nearest CIGWELD dealer.

CIGWELD has an assortment of welding accessories and personal protection equipment for purchase. For ordering information contact your local CIGWELD distributors or visit us on our website.

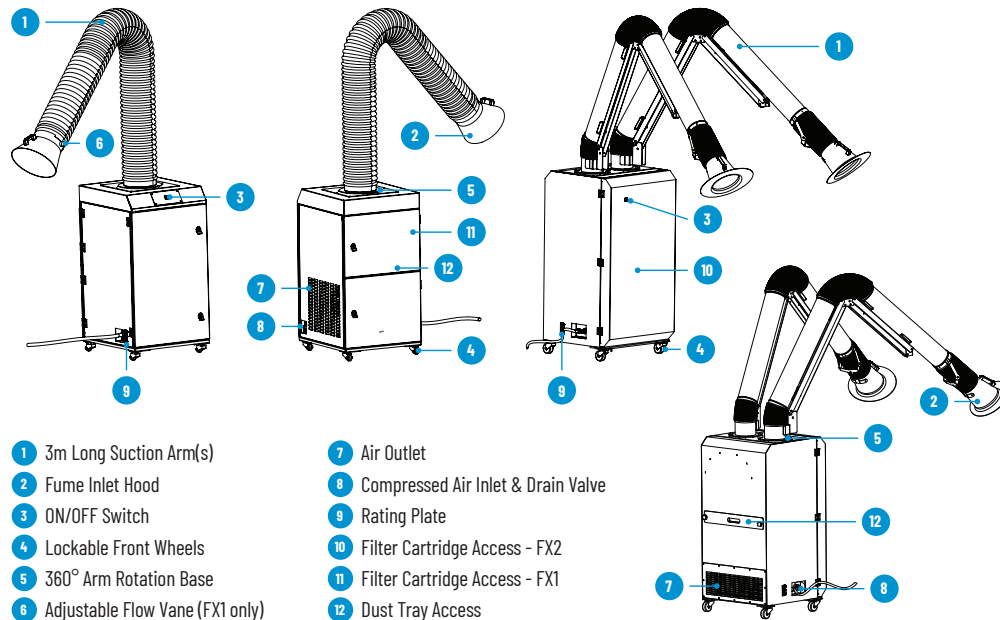
SECTION 2: INTRODUCTION

BigSucker FX1 and FX2 filter out pollutants such as fumes and dust, class F9 (AS1324.1), in particular, they filter out welding fumes containing CMR (Carcinogenic Mutagenic Reprotoxic) substances, e.g. generated by welding high alloyed steels or welding consumables with more than 5 % (Cr, Ni).

BigSucker FX1 and FX2 feature a compact design, easy mobility, user-friendly operation, high purification efficiency, and low noise levels. Widely applicable for all types of ARC Welding, inclusive of Plasma, Carbon Arc Gouging and Gas Cutting or Welding.

2.01 EQUIPMENT

BigSuckers come standard to start protecting your area from fumes, wood and dust particles including:
Operating manual, 3m Arm(s), Unit on castors, convenient handle for Fume Hood maneuverability.



SECTION 3: TECHNICAL DATA

	BigSucker FX1		BigSucker FX2
PARAMETER	MODEL FX1	MODEL FX2	UNIT
SUPPLY VOLTAGE	230	400	V
No. of PHASES	1	3	-
FREQUENCY	50	50	Hz
MOTOR POWER	1.1	3.0	kW
MOTOR NOISE LEVEL AT 100%	72	72	dB(A)
FILTER Grade	F9	F9	-
FILTRATION EFFICIENCY	> 99%	> 99%	-
FILTER SURFACE AREA	8	15.6	m ²
CAPACITY / Flow Rate	1,200	2,800	m ³ /h
EXTRACTION ARM RADIUS	3	3	m
WEIGHT with ARM(s)	150	305	kg
DIMENSIONS without ARM(s)	L600 W560 H1100	L680 W680 H1350	mm
AUTO FILTER DUSTING - Compressed Air	YES	YES	-
COMPRESSED AIR Supply	400 - 600	400 - 600	kPa

SECTION 4: ASSEMBLY AND COMMISSIONING

General safety regulations for handling the equipment can be found in SECTION 1 "SAFETY".
Read thoroughly before equipment use!

4.01 PACKAGE CONTENTS

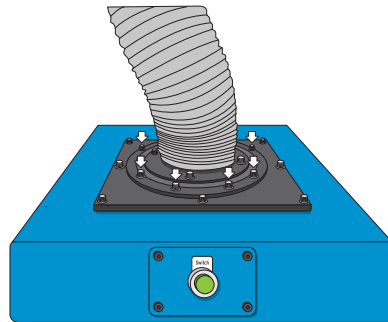
1. BASE Unit
2. FUME EXTRACTOR ARM(s)
FX1 - Single arm, FX2 - Two arms
3. Operating Manual, packed with Fume Extraction Arm.
4. Door Keys, Two off
FX1 - With Fume Extraction Arm, FX2 - With manual
5. Fastener set, packed with Fume Extraction Arm.
(Set of 8 per arm, consisting of M6x16mm screw with spring and flat washers)

4.02 INITIAL CHECKS

1. Check the main body of the BigSucker has not been damaged during transport and both front and rear doors can open and be locked in the closed position.
2. Check that the intended supply voltage is as per rating plate.
3. Check the FUME EXTRACTOR ARM for transport damage and the outside casing is intact along whole length.

4.03 FUME EXTRACTOR ARM INSTALLATION

Fume Extractor Arm to be mounted atop of main unit,
as shown below:



NOTE

It is recommended that Arm installation be carried out by three personnel, if arm is unable to be supported mechanically.

1. With the flange of the FUME EXTRACTOR ARM in place, fix using the set of fasteners supplied.
2. Once fixed in place, make sure ARM can rotate freely through 360°.

4.04 POWER-UP

1. Check that the Filter Cartridge is secured in place.
FX1 - Behind upper rear door
FX2 - Behind front door.
2. Ensure all doors, front and rear, are now all closed.
3. Connect supply cable to mains power.
4. For the FX1 model, set Adjustable Flow Vane to fully open position.
5. Activate BigSucker from its ON/OFF Switch.
6. Check for any air leaks through door seals. Air to exit out of Air Outlet.
7. For the FX1 model, adjust vane to check for flow rate control at the Fume Inlet Hood.

4.05 AUTO FILTER DUSTING

To assist in the cleaning of the Filter Cartridge, connect a compressed air line to the Compressed Air inlet.

A puff of compressed air is used to dislodge particulate build-up off the exterior Filter Cartridge surface, to settle into the dust tray.

A short air burst occurs every 100 seconds (approximately) when the BigSucker is powered up and compressed air supplied.



WARNING

Compressed Air supply to be between 400 and 600kPa (maximum).

1. Compressed Air Inlet: Nitto Hi-Cupla plug
2. Drain Value to be kept in closed position for dusting operation (thread: 3/8 BSP).



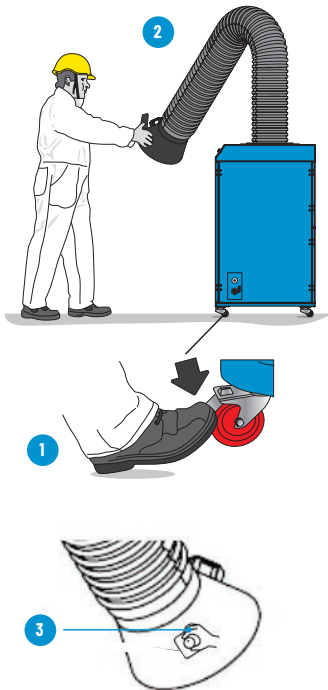
NOTE

To relocate BigSucker, apply force on the main body. Do not pull by the Supply Cable or the suction arm.

SECTION 5: OPERATION

5.01 SET-UP

- 1 Position BigSucker within reach of the weld area and ensure castors are then locked in place.
- 2 Locate Fume Hood to area just above where fumes are expected.
- 3 For FX1 model, adjust vane to fully open position, at onset.

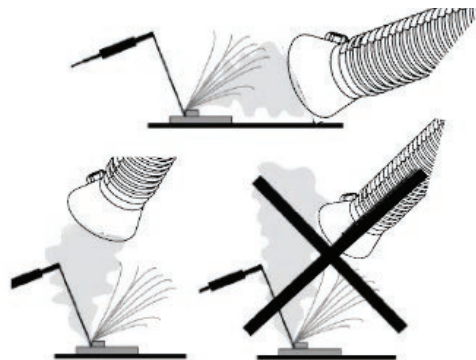


NOTE

Before each use, check over Base Unit, Extractor Arm(s) and Supply Cable for any damage.

5.02 DIRECTIONS FOR USE

Adjust Fume Hood position to optimise fume capture.



SECTION 6: MAINTENANCE



WARNING

The mains supply must be disconnected during cleaning and maintenance



CAUTION

Only persons with the appropriate electrical knowledge (authorised personnel), are to remove panels and expose internal wiring.



CAUTION

The product is covered by manufacturer's warranty. Any attempt to carry out repair work by non-authorised service centers or personnel will void the warranty.



NOTE

Regular maintenance is important for safe and reliable operation more frequently when fumes are particularly thick or surrounding area is dusty



WARNING

BigSucker units must only be disassembled in a well-ventilated room.

Vacuum clean as needed.

Before each use - make sure that:

- Product and cables are not damaged.

Maintenance is recommended at least once a year and is to be performed by trained personnel.

- Change Filter Cartridge as needed. Refer Section 6.03.
- Check exterior surface of Extractor Arm is intact. Replace Arm if needed.
- Check for any build-up at gaurd of Fume Hood.

6.01 FILTER CARTRIDGE CLEANING

Filter cartridge can accumulate dust due to moisture in the air and static electricity, thus reducing the effectiveness of the AUTO FILTER DUSTING. Therefore, periodic manual cleaning of the filter cartridge will also be necessary.

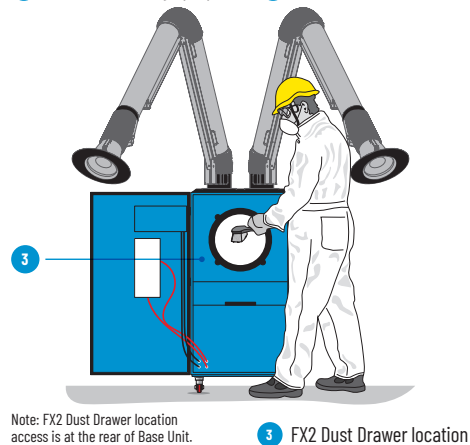
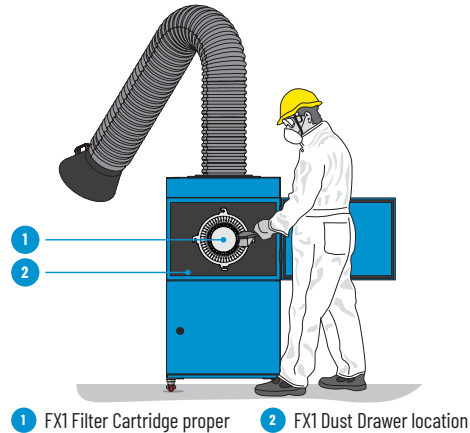
STEPS FOR CLEANING



WARNING

Use PPE (Personal Protective Equipment) when replacing the filter cartridge.

1. Ensure the unit has come to a complete stop and has been disconnected from the external supply.
2. Open the upper rear door panel to expose filter cartridge.



Note: FX2 Dust Drawer location access is at the rear of Base Unit.

3. Undo retaining nuts to release Filter cartridge.
4. Inspect the filter cartridge:
 - Use low pressure compressed air or a brush with soft bristles to clean any dust build-up.
 - If signs of any holes or tears in the filter surface, replace it immediately, see Section 6.01 "Changing the filter cartridge".
- Note: When using compressed Air for manual cleaning, ensure pressure is not greater than 200kPa
5. Inspect rubber sealing ring at cartridge end:
 - If the strip is intact and elastic, clean the dust from its surface.
 - If damaged, replace it.
6. Reinstall the cleaned or new filter cartridge back into position, following the reverse steps of removal.
7. Perform a test run to check performance.

6.02 CLEANING OF DUST DRAWER

The DUST DRAWER is to be emptied on a regular basis.



WARNING

Use PPE (Personal Protective Equipment) when clearing the DUST DRAWER.

1. Stop running of the unit.
2. To access and slide the Dust Drawer out:
 - FX1 open the upper rear door panel.
 - FX2 unscrew two rear terminal knobs.
3. Take out dust drawer and dump the dust into designated dust bin.
4. Put back dust drawer and lock the door.

6.03 CHANGING THE FILTER CARTRIDGE

The filter cartridge is disposable and is to be thrown away after use. The life span of the filter cartridge varies greatly depending on how the BigSucker is used and how much and what type of pollutants are collected.

Regularly checking and cleaning every 6 months is necessary. Always check that the hoses for the extraction arm and the fan inlet are undamaged before it is decided to replace the filter cartridge.



WARNING

Use PPE (Personal Protective Equipment) when replacing the filter cartridges.



Filter cartridge change instructions:

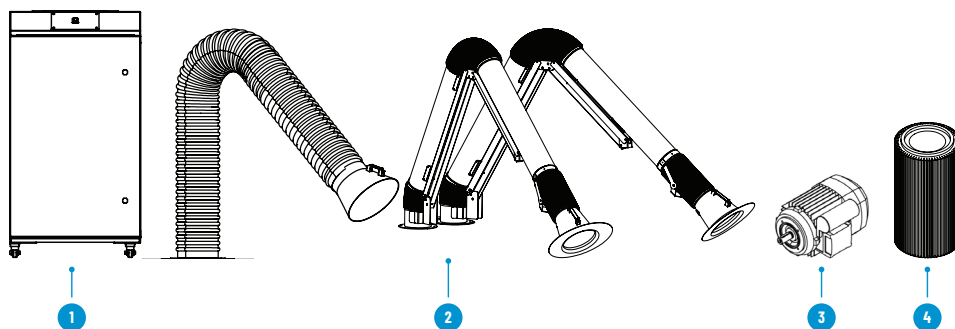
1. Turn unit off and disconnect from mains supply.
2. Open upper rear door and slowly remove filter cartridge, setting it aside.
3. Wipe down any dust or build up on internal wall surface that mates with the sealing ring of filter cartridge.
4. Carefully remove new filter cartridge from bag(set aside for later reuse) and inspect for any damage.
5. Insert new filter cartridge into position, fix in place and close door panel.
6. Place used filter cartridge into bag set aside earlier and seal for disposal according to local regulations.

SECTION 7: ORDERING INFORMATION

7.01 ORDERING MODELS

ORDERING NUMBER	TYPE	NOTES
455FX01	BigSucker FX1, 230V 50Hz, 3m Single Arm	AU/NZ
455FX02	BigSucker FX2, 400V 50Hz, 3m Double Arm	AU/NZ

7.02 BigSucker SPARE PARTS



ITEM	DESCRIPTION	PART NO. FX1	PART NO. FX2
1	Base, BigSucker	455500	455504
2	Arm, BigSucker (Single)	455501	455508
	Arm, BigSucker (Dual - FX2 only)	-	455505
3	Motor, BigSucker	455502	455506
4	Filter Cartridge, BigSucker	455503	455507

This Page Intentionally Blank



LIMITED WARRANTY TERMS

LIMITED WARRANTY: CIGWELD Pty Ltd, An ESAB Brand, hereafter, "CIGWELD" warrants to customers of its authorized distributors hereafter "Purchaser" that its products will be free of defects in workmanship or material. Should any failure to conform to this warranty appear within the time period applicable to the CIGWELD products as stated below, CIGWELD shall, upon notification thereof and substantiation that the product has been stored, installed, operated, and maintained in accordance with CIGWELD's specifications, instructions, recommendations and recognized standard industry practice, and not subject to misuse, repair, neglect, alteration, or accident, correct such defects by suitable repair or replacement, at CIGWELD's sole option, of any components or parts of the product determined by CIGWELD to be defective.

CIGWELD MAKES NO OTHER WARRANTY, EXPRESS OR IMPLIED. THIS WARRANTY IS EXCLUSIVE AND IN LIEU OF ALL OTHERS, INCLUDING, BUT NOT LIMITED TO ANY WARRANTY OF MERCHANTABILITY OR FITNESS FOR ANY PARTICULAR PURPOSE.

LIMITATION OF LIABILITY: CIGWELD SHALL NOT UNDER ANY CIRCUMSTANCES BE LIABLE FOR SPECIAL, INDIRECT OR CONSEQUENTIAL DAMAGES, SUCH AS, BUT NOT LIMITED TO, LOST PROFITS AND BUSINESS INTERRUPTION.

The remedies of the Purchaser set forth herein are exclusive and the liability of CIGWELD with respect to any contract, or anything done in connection therewith such as the performance or breach thereof, or from the manufacture, sale, delivery, resale, or use of any goods covered by or furnished by CIGWELD whether arising out of contract, negligence, strict tort, or under any warranty, or otherwise, shall not, except as expressly provided herein, exceed the price of the goods upon which such liability is based. No employee, agent, or representative of CIGWELD is authorized to change this warranty in any way or grant any other warranty.

PURCHASER'S RIGHTS UNDER THIS WARRANTY ARE VOID IF REPLACEMENT PARTS OR ACCESSORIES ARE USED WHICH IN CIGWELD'S SOLE JUDGEMENT MAY IMPAIR THE SAFETY OR PERFORMANCE OF ANY CIGWELD PRODUCT. PURCHASER'S RIGHTS UNDER THIS WARRANTY ARE VOID IF THE PRODUCT IS SOLD TO PURCHASER BY NON-AUTHORIZED PERSONS.

The warranty is effective for the time stated below beginning on the date that the authorized distributor delivers the products to the Purchaser. Not with standing the foregoing, in no event shall the warranty period extend more than the time stated plus one year from the date CIGWELD delivered the product to the authorized distributor.

Any claim under this warranty must be made within the warranty period which commences on the date of purchase of the product. To make a claim under the warranty, take the product (with proof of purchase from a CIGWELD Accredited Seller) to the store where you purchased the product or contact CIGWELD Customer Care 1300 654 674 for advice on your nearest Service Provider. CIGWELD reserves the right to request documented evidence of date of purchase. CIGWELD or our Accredited Distributor must be notified in writing of its claim within seven (7) days of becoming aware of the basis thereof, and at its own expense returning the goods which are the subject of the claim to CIGWELD or nominated Accredited Distributor/Accredited Service Provider

This warranty is given.

CIGWELD Pty Ltd A.B.N. 56007226815

71 Gower Street, Preston Victoria, Australia, 3072

Phone: 1300 654 674

Email: enquiries@cigweld.com.au

Website: www.cigweld.com.au

This warranty is provided in addition to other rights and remedies you have under law: Our goods come with guarantees which cannot be excluded under the Australian Consumer Law. You are entitled to replacement or refund for a major failure and to compensation for other reasonably foreseeable loss or damage. You are also entitled to have the goods repaired or replaced if the goods fail to be of acceptable quality and the failure does not amount to a major failure.

Please note that the information detailed in this statement supersedes any prior published data produced by CIGWELD.

*WARRANTY SCHEDULE – BIGSUCKER

WARRANTY	WARRANTY PERIOD (PARTS AND LABOUR)
BigSucker FX1	1 Year
BigSucker FX2	1 Year

CIGWELD LIMITED WARRANTY DOES NOT APPLY TO:

- Obsolete goods sold at auction, second-hand goods and prototype goods.
- Consumable Parts for MIG, Plasma welding, Plasma cutting and Oxy fuel torches, O-rings, fuses, filters or other parts that fail due to normal wear.

Notes:

* No employee, agent, or representative of CIGWELD is authorized to change this warranty in any way or grant any other warranty, and CIGWELD shall not be bound by any such attempt. Correction of non-conformities, in the manner and time provided herein, constitutes fulfilment of CIGWELD's obligations to purchaser with respect to the product.

* This warranty is void, and seller bears no liability hereunder, if purchaser used replacement parts or accessories which, in CIGWELD's sole judgment, impaired the safety or performance of any CIGWELD product and if the unit is altered or serviced by an unauthorised CIGWELD Service Provider. Purchaser's rights under this warranty are void if the product is sold to purchaser by unauthorized persons.

This Page Intentionally Blank

This Page Intentionally Blank

CIGWELD

AN **ESAB** BRAND

Version No: 01 Issue Date: 24-04-2025 Manual No: 458204



CIGWELD Pty Ltd An ESAB Brand 71 Gower Street, Preston VIC 3072 Australia
CUSTOMER CARE: Tel: 1300 654 674 | Intl Tel: +61 9474 7400
Email: enquiries@cigweld.com.au



CIGWELD.COM.AU

In the interest of continuous improvements, CIGWELD Pty Ltd ABN 58 007 226 816 (An ESAB Brand) reserves the right to change specifications or design on any of its products without prior notice.