

# ARC TROLLEY-UPR

## ASSEMBLY INSTRUCTIONS

### ASSEMBLY HARDWARE (INCLUDED):

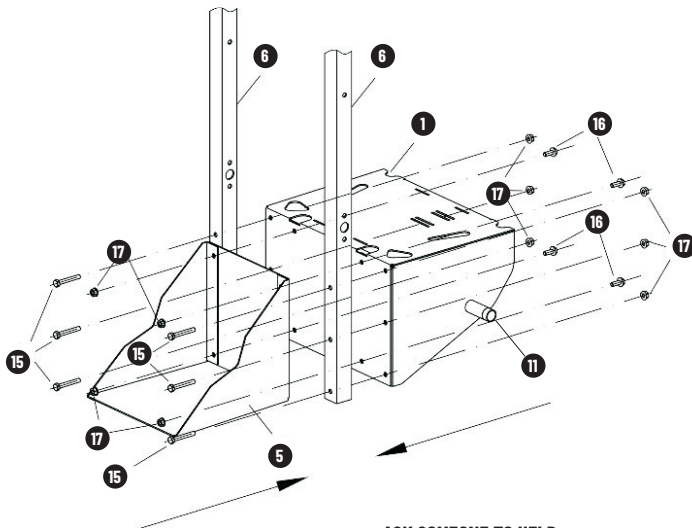
P/N	DESCRIPTION	QTY
1	FRAME	1
2	CROSS BRACE 1	2
3	RUBBER STOPPER	4
4	CABLE HOLDER	4
5	GAS CYLINDER BASE	1
6	VERTICAL MEMBER	2
7	CROSS BRACE 2	1
8	HANDLE TUBE 1	1
9	HANDLE TUBE 2	1
10	WHEEL	2
11	WHEEL AXLE	1

P/N	DESCRIPTION	QTY
12	WHEEL RING RETAINER	2
13	HANDLE	2
14	COLLAR NUT M6	4
15	COLLAR SCREW M8X40	16
16	COLLAR SCREW M8X20	4
17	COLLAR NUT M8	20
18	AXLE WASHER RING	2
19	MACHINE FASTENING STRAP	2
20	CHAIN	2
21	CABLE HOLDER CAP	4

### STEP 1

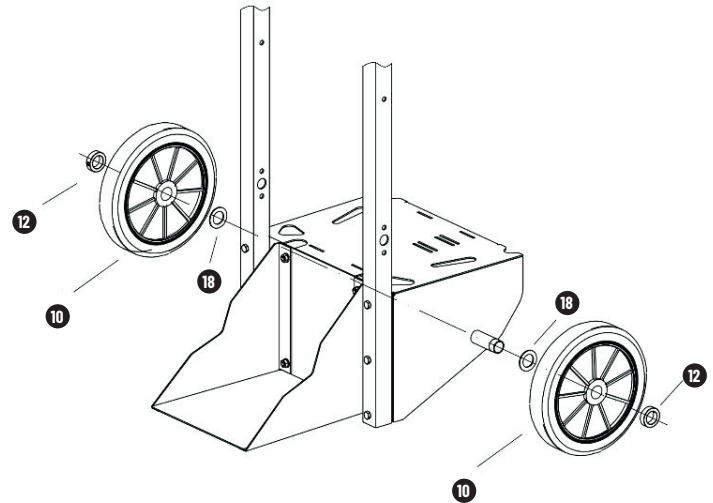
#### PRO TIP:

APPLY HAND TIGHT FORCE TO ALL SCREWS THROUGH THE ASSEMBLY PROCESS.  
ASSEMBLE THE TROLLEY ON A FLAT SURFACE TO OBTAIN THE BEST RESULT

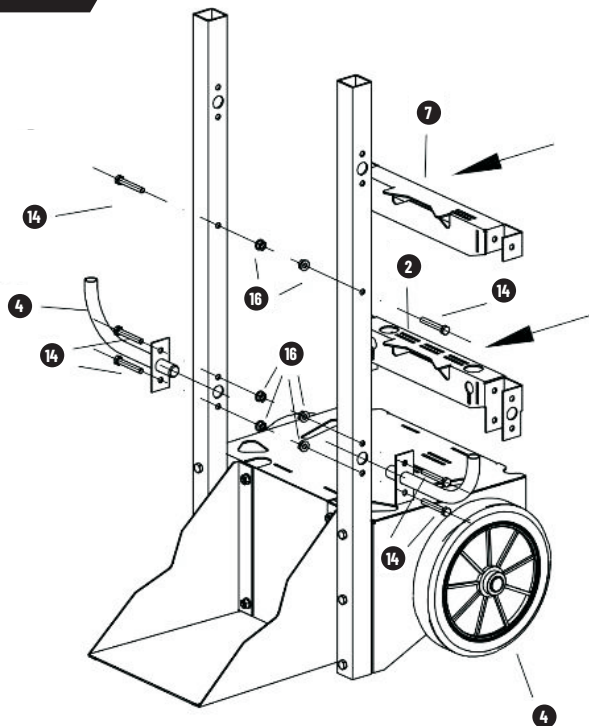


ASK SOMEONE TO HELP HOLDING THE BACK OF THE TROLLEY WHILE YOU ATTACH THE MIDDLE SHELF AND VERTICAL MEMBERS.

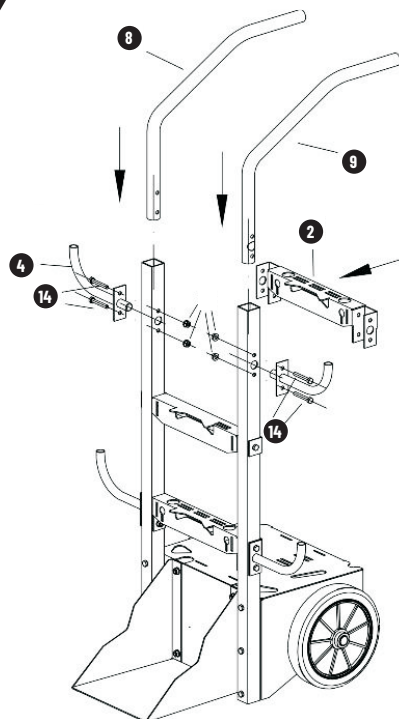
### STEP 2



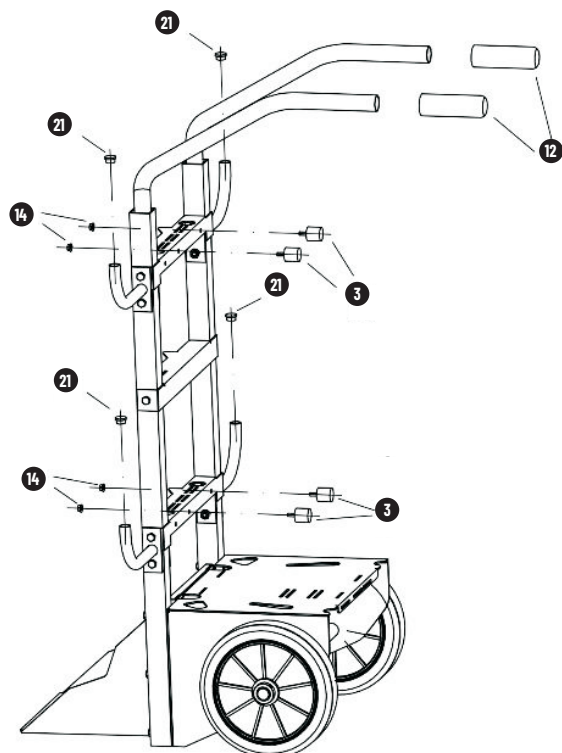
### STEP 3



### STEP 4

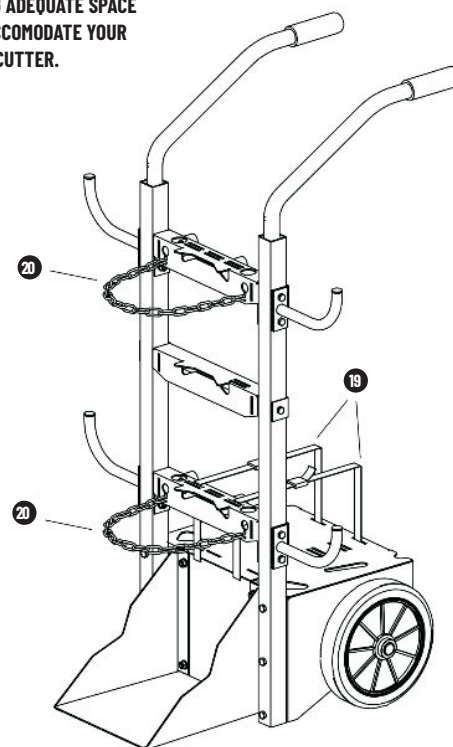


### STEP 5



### STEP 6

USE THE SLOTS IN THE FRAME AND CROSS BRACE 1 TO PASS THE STRAPS THROUGH, LEAVING ADEQUATE SPACE TO ADJUST AND ACCOMMODATE YOUR WELDER/PLASMA CUTTER.



MAKE SURE TO FULLY TIGHTEN ALL THE NUTS AND SCREWS AT THIS POINT.