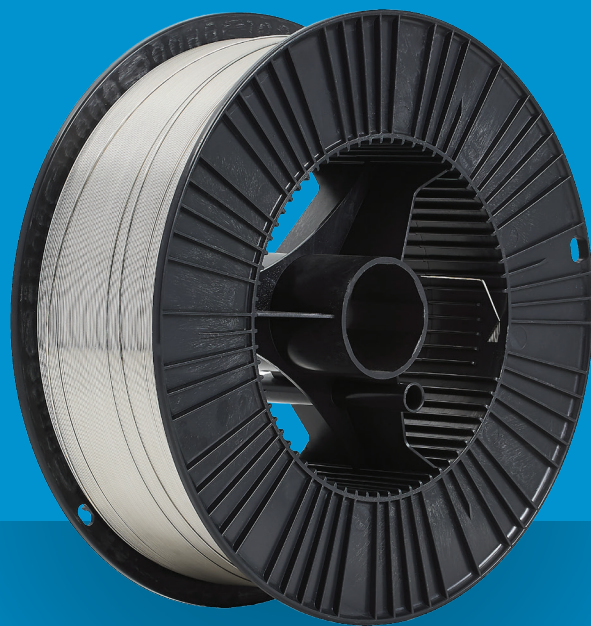


## AUTOCRAFT AL5183

### PRODUCT DATA SHEET



### PREMIUM QUALITY ALUMINIUM WELDING WIRE



### GAS METAL ARC WELDING (MIG) WIRES

#### AUTOCRAFT AL5183

- For GMAW welding of wrought and cast aluminium alloys containing magnesium.
- Superior surface cleanliness for improved resistance to porosity.

#### WIRE ANALYSIS LIMITS:

Single values are maximum allowable, unless otherwise stated.

Si:	0.40%
Fe:	0.40%
Cu:	0.10%
Mn:	0.5-1.0%
Mg:	4.3-5.2%
Cr:	0.05-0.25%
Zn:	0.25%
Ti:	0.15%
Total Others:	0.15%
Al:	Balance

#### CLASSIFICATIONS:

ISO AS/NZS 18273:	S Al 5183
AWS/ASME-SFA A5.9:	ER5183

#### TYPICAL ALL WELD METAL MECHANICAL PROPERTIES:

Single-vee butt weld with 5083 Aluminium (reduced section tensile specimen).

WELDING GRADE ARGON:	
0.2% Proof Stress	152 MPa
Tensile Strength	297 MPa
Elongation	16%

DESCRIPTION AND APPLICATIONS:

Autocraft AL5183 is a premium quality Aluminium welding wire that is typically used in the marine and structured industries, where higher strength and good fracture toughness is required.

Autocraft AL5183 is ideally suited to the welding of Alloy 5083. Autocraft AL5183 is not suitable for heat treatment.

RECOMMENDED\* SHIELDING GAS:

AS 4882:	SG-A SG-AHe-25 SG-HeA-25
ISO 14175 / AWS A5.32:	11*- CERT SUPPLIED 13 13
Welding grade Ar or Ar+He (25%) or He+Ar (25%)	

PACKAGING & OPERATING DATA:

These machine settings are a guide only. Actual voltage and welding current used will depend on machine characteristics, plate thickness, run size, shielding gas and operator technique etc. For 5XXX type welding wires use welding current settings on the higher side of the range specified below and arc voltages on the lower side of the range. For 1XXX, 2XXX and 4XXX type welding wires use welding current settings on the lower side of the specified range and arc voltages on the higher side.

WIRE DIAMETER (MM)	VOLTAGE RANGE (VOLTS)	WIRE FEED SPEED (METERS/MIN)	CURRENT RANGE (AMPS)	PACK TYPE*	PACK WEIGHT	PART NO.
1.0	17-23	6.0-16.5	110-220	Spool	7kg	722239
1.2	20-25	5.5-12.0	150-250	Handy Spool	2kg	720206
1.2	20-25	5.5-12.0	150-250	Spool	7kg	722240

\* Spool (ø300mm).

