

ARCAIR[®] TRADE

AN ESAB[®] BRAND



TOUGH
TESTED
IN AUSTRALIA



1000

AMPS MAX

K4000

GOUGING TORCH

ARCAIR TRADE K4000: CUT COSTS, NOT CORNERS!

Looking to save time and money on metal removal? The **Arcair Trade K4000 Torch (P/N ATK4000)** is engineered for maximum efficiency, helping you get the job done faster and with less effort—so you can **reduce labor costs, cut downtime, and boost productivity.**

Whether in steel fabrication, shipyards, railroads, or farms, this torch is your **cost-effective solution for heavy-duty metal removal.** The best part? It's designed to perform at the highest levels at a lower cost that doesn't disappoint!

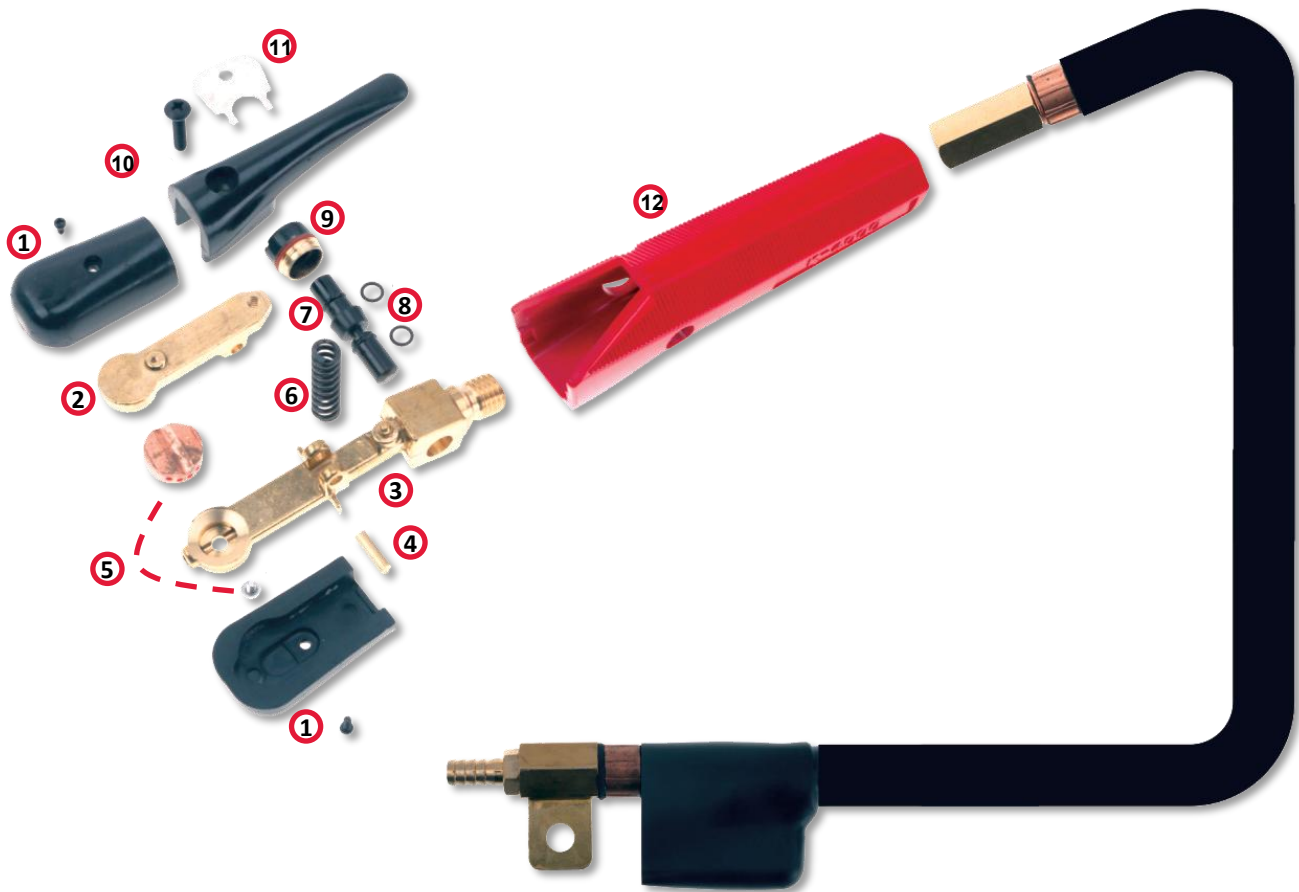
More Work, Less Cost – Here's How:

- **Faster Metal Removal** – Spend less time on each job, reducing labor hours.
- **Reduced Operator Fatigue** – Lightweight design means less strain, more efficiency.
- **Durable, Long-Lasting Build** – Invest once, save on frequent replacements. Low-cost consumables available too!
- **Optimal 15° Torch Angle & 360° Swivel Cable** – Work smarter, not harder, with better control and flexibility.
- **High-Quality Cable Hose** – Delivers consistent performance, minimizing maintenance costs.

With the Arcair Trade K4000, every cut saves you cash.
Upgrade today and take control of your productivity!



TORCH SPARE PARTS AND SPECS



TORCH SPECIFICATIONS:

PART NUMBER	DESCRIPTION
ATK4000	ARCAIR TRADE K4000 GOUGING TORCH

UNIT
BARCODE



9 310574 086005

DUTY CYCLE	70% @ 1000A
LENGTH	2.1M
ELECTRODE RANGE	ROUND (4.0 - 13mm (5/32" - 1/2") FLAT 9.5 - 16mm (3/8" - 5/8")

TORCH SPARES ORDERING INFORMATION:

ITEM	PART NUMBER	DESCRIPTION
1	ATK4-001	ATK4000 TOP AND BOTTOM INSULATION CAP w/ SCREW
2	ATK4-003	ATK4000 UPPER ARM
3	ATK4-004	ATK4000 TORCH BODY
4	ATK4-005	ATK4000 HINGE PIN
5	ATK4-006	ATK4000 INJECTION NOZZLE w/ SCREW
6	ATK4-008	ATK4000 SPRING
7	ATK4-009	ATK4000 SPOOL & O-RING
8	ATK4-010	ATK4000 O-RING
9	ATK4-011	ATK4000 VALVE BONNET
10	ATK4-012	ATK4000 LEVER INSULATION w/ SCREW
11	ATK4-014	ATK4000 BONNET WRENCH
12	ATK4-015	ATK4000 HANDLE

CONNECTING KIT:

PART NUMBER	DESCRIPTION
ATK4000CK	ATK4000 CONNECTING KIT

The **ATK4000 Connecting Kit** allows the operator to swiftly fit the ATK4000 to a Power Source, without the hassle of having to source individual connectors, cables, etc.

The connecting cable is a ready-to-go solution that is not only compatible with the ATK4000, but **also with our Arcair K4000 torch, and others.**

The kit's contents are:

- 2m Copper Cable (70mm²) fitted with a Twist-Lock connector and Cable Lug (12mm) to connect the torch to your power source.
- 2m Gas Hose fitted with a NITTO* Hi-Cupla* style Connector and a Hose Clamp (Hose ID: 10mm), to connect the torch to your air compressor.

*CIGWELD is in no way affiliated with NITTO®. Reference to NITTO® fittings, connectors and styles are for your convenience only.

CIGWELD

AN ESAB BRAND



DESIGNED
& TESTED
IN AUSTRALIA
FOR OVER 100 YEARS

SUPRE GOUGE



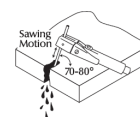
PAIR YOUR ARCAIR TRADE K4000 WITH SUPRE GOUGE CARBONS!

FAST, CLEAN, SMOOTH, HASSLE-FREE GOUGING

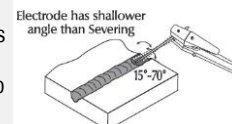
- Superior arc stability
- Able to remove metal from a wide range of common ferrous & non-ferrous metals
- Designed for DC operation
- CIGWELD's high efficiency gouging carbon takes carbon technology and performance to a new level.
- The improved outer strength of these carbons allows for additional stick out length

GOUGING METHODS

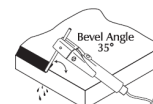
Severing (cutting) is a form of gouging where the operator holds the electrode at a steeper travel angle (70 - 80°) to the workpiece and moves the arc in a sawing motion (Figure 1). A gouging carbon can cut non-ferrous materials 1.5 times its own thickness.



Washing is a form of gouging that allows the removal of metal from large areas, hard facing deposits and riser pads on castings. An arc is struck and then the electrode is weaved from side to side using a travel angle of 15 - 70° to the workpiece, depending on the required depth of the gouge.



Bevelling can be achieved by using a travel angle of 90 degrees and a work angle equal to the bevel angle



PACKAGING AND OPERATING DATA

	Part Number	Size (mm)	Rods per PK	Packet	Carton QTY	Current Range (amps)	Gouge Width (mm)	Gouge depth Single Pass (mm)	Air Pressure (kPa)	Air Flow (L/min)
POINTED	22035003	4.8mm	100	1.1kg	10	150 - 200	8	6	550 - 690	450
	22045003	6.5mm	50	0.8kg	10	250 - 350	10	10	550 - 690	450
	22055003	8.0mm	50	1.3kg	10	300 - 400	11	13	550 - 690	450
	22065003	9.5mm	50	1.6kg	5	400 - 550	13	14	550 - 690	450
	22075003	13.0mm	50	3.7kg	3	800 - 950	16	19	550 - 690	930
JOINTED	24106003	16.0mm	20	2.9kg	5	950 - 1200	19	24	550 - 690	930
FLAT	35035003	15.0mm	50	2.4kg	10	350 - 400	18	8	550 - 690	450