

CIGWELD
AN ESAB BRAND



NEW 2023 PRODUCTS

LAUNCH MAGAZINE



FILLER METALS | GAS EQUIPMENT | WELDING EQUIPMENT | PERSONAL PROTECTIVE EQUIPMENT



CIGWELD ESAB AUSTRALIA LAUNCH MAGAZINE | DEC-2023

FOR OVER 100 YEARS CIGWELD HAS BEEN THE MARKET LEADER IN AUSTRALIA AND THE NEAR PACIFIC (SPAC). THROUGHOUT OUR HISTORY WE HAVE BEEN RESPONSIBLE FOR INVENTING MARKET LEADING PRODUCTS LIKE THE COMET® WELDING, BRAZING, HEATING AND CUTTING SYSTEM - THE ORIGINAL SYSTEM THAT SO MANY HAVE TRIED TO COPY. THE OUTPERFORMING HIDEROK® NOD-DOWN WELDING HELMET, INVENTED BY OUR COMPANY, IS POSSIBLY THE MOST COPIED WELDING HELMET STYLE IN THE WORLD TODAY, BUT NOT COPIED WELL DUE TO OUR UNIQUE NOD-DOWN FEATURE!

CIGWELD were also the first to manufacture a locally made hand-held Plasma Cutting machine called the TRANSPLASMA AP30 (back in the late 1980's).

CIGWELD has over the years developed the largest consistent range of Electrodes, Gas & TIG Rods, MIG and Flux Cored Welding and Hardfacing Wires and those market leading names are still selling strong today.

We are proud to continue our legacy established by our forefathers from JB Arnold (Comet, Comweld), EMF (Transarc, Transmig), Cobalide Industries (Cobalarc), CIG Welding Products Division (Arcmaster, Hiderok, Tweco and Transtig), companies who were all merged into today's modern CIGWELD.

Today CIGWELD is as part of the worldwide ESAB Corporation and we continue to evolve our product offerings based on customer/end-user feedback, with a focus on improved safety, smaller size, efficiency, ease of use and competitiveness.

Through persistence and dedication over the past 12 months, CIGWELD/ESAB are proud to share with you the latest range of goods we have released in 2023.

Thank you for choosing CIGWELD and ESAB products. We look forward to working with you in the future and we trust you'll enjoy using our latest arrange of exciting products.

It's time to release your inner Welditude®!

ARCMASTER



SENTINEL[™] A60

COMET

WeldSkill

Transmig

TWECO TRADE[™]
AN ESAB BRAND

BLUEJET[™]

**SUPRE
GOUGE**

CUTMASTER+

VERTI-COR

TWECO[®]
AN ESAB BRAND

STOODY[®]
AN ESAB BRAND

METAL-COR

AUTOCRAFT

CONTENTS

FILLER METALS 4

GAS EQUIPMENT 6

Gas Kits	6
Gas Packs And Slabs	7
Regulators	8
Blowpipe & Cutting Attachment	8
Nozzles & Tips	9
LPG Expansion Burners	10
Comet Flashback Arrestors	11
Handling Equipment	12
Cutmaster+ Plasma	14

WELDING EQUIPMENT 16

BlueVENOM MG130	16
BlueVENOM XF186	16
BlueVENOM XF190	17
BlueVENOM XF200P ³	18
Transmig 555i	21
MIG Front End Consumables & Liners	22
TWECO Trade	23
Front End Starter Kits & Accessories	24

PERSONAL PROTECTIVE EQUIPMENT 25

Arcmaster XC20	25
Arcmaster XC30	25
Arcmaster XC40	25
Arcmaster XC50	26
Arcmaster XC70	26
Sentinel A60	27
Sentinel A60 with ESAB PAPR	27

FILLER METALS

WELDSKILL 70S-6

ER70S-6 MIG WIRE

Low cost and great quality

- A manganese-silicon alloy solid wire for GMAW welding of mild & low alloy steels
- Designed for use with CO₂ and Argon based shielding gases
- Great quality copper-coated wire



P/N:	Description	UOM	RRP (Exc. GST)	RRP (Inc. GST)
WS1508	Weldskill 70S-6 0.8mm 15kg	RL	\$50.55	\$55.61
WS1509	Weldskill 70S-6 0.9mm 15kg	RL	\$47.25	\$51.98
WS1510	Weldskill 70S-6 1.0mm 15kg	RL	\$47.70	\$52.47
WS1512	Weldskill 70S-6 1.2mm 15kg	RL	\$46.20	\$50.82
WS1516	Weldskill 70S-6 1.6mm 15kg	RL	\$45.60	\$50.16
WS0506	WeldSkill 70S-6 0.6mm 5.0kg	RL	\$30.40	\$33.44
WS0508	WeldSkill 70S-6 0.8mm 5.0kg	RL	\$19.25	\$21.18
WS0509	WeldSkill 70S-6 0.9mm 5.0kg	RL	\$19.00	\$20.90
WS25009	Weldskill 70S-6 0.9mm 250kg	EA	\$756.00	\$831.60
WS25012	Weldskill 70S-6 1.2mm 250kg	EA	\$739.20	\$813.12

NEXT-GEN

COMWELD 308L, 316L, 316LSi, 309L

SUITABLE FOR GAS AND GTAW (TIG) WELDING

Low cost and great quality

- Resealable 5kg plastic tube
- Suitable for Gas and GTAW (TIG) welding
- **Comweld 308L** End stamped AS/AWS class '308L'
- **Comweld 316L** End stamped AS/AWS class '316L'
- **Comweld 316LSi** For welding 18% Cr-8% Ni and 18% Cr-10%Ni-3% Mo. alloys
- **Comweld 309L** End stamped AS/AWS class '309L'



P/N:	Description	UOM	RRP (Exc. GST)	RRP (Inc. GST)
321406	Comweld 308L 1.6mm 5kgs	PK	\$144.68	\$159.15
321407	Comweld 308L 2.4mm 5kgs	PK	\$137.01	\$150.71
321400	Comweld 316L 1.6mm 5kgs	PK	\$163.77	\$180.15
321401	Comweld 316L 2.4mm 5kgs	PK	\$158.82	\$174.70
321426	Comweld 316LSi 1.6mm 5kg	PK	\$163.77	\$180.15
321427	Comweld 316LSi 2.4mm 5kg	PK	\$158.82	\$174.70
321403	Comweld 309L 1.6mm 5kgs	PK	\$177.14	\$194.85
321404	Comweld 309L 2.4mm 5kgs	PK	\$168.88	\$185.77

WELDSKILL 316L

ALL STAINLESS MIG AND TIG WIRES

Low cost and great quality

- For the welding of matching 316 and 316L stainless steel grades



P/N:	Description	UOM	RRP (Exc. GST)	RRP (Inc. GST)
WTS1016	Weldskill 316L 1.6mm 900mm 1kg	PK	\$34.17	\$37.59
WTS1024	Weldskill 316L 2.4mm 900mm 1kg	PK	\$33.88	\$37.27

NEXT-GEN

AUTOCRAFT 308LSi, 309LSi, & 316LSi

STAINLESS STEEL SOLID MIG WIRE

Low cost and great quality

- Extra low carbon (< 0.03%) weld deposits for resistance to intergranular corrosion
- High silicon level for improved arc stability and increased weld pool fluidity and edge wetting
- 308LSi - For the GMAW welding of 20% Cr / 10% Ni type stainless steels
- 309LSi - For the GMAW welding of 24% Cr / 13% Ni type stainless steels
- 316LSi - For the GMAW welding of 18% Cr / 8% Ni and 19% Cr / 13% Ni / 2.5 Mo type stainless steels



P/N:	Description	UOM	RRP (Exc. GST)	RRP (Inc. GST)
721271	Autocraft 308LSi 0.9mm 15kg	KG	\$26.81	\$29.49
721272	Autocraft 308LSi 1.2mm 15kg	KG	\$26.59	\$29.25
721276	Autocraft 309LSi 0.9mm 15kg	KG	\$32.10	\$35.31
721277	Autocraft 309LSi 1.2mm 15kg	KG	\$31.57	\$34.73
721285	Autocraft 316LSi 0.8mm 1kg	EA	\$42.03	\$46.23
720288	Autocraft 316LSi 0.8mm 5kg	KG	\$39.99	\$43.99
720283	Autocraft 316LSi 0.9mm 5kg	KG	\$37.45	\$41.20
721286	Autocraft 316LSi 0.9mm 15kg	KG	\$37.63	\$41.39
721287	Autocraft 316LSi 1.2mm 15kg	KG	\$35.44	\$38.98



AUTOCRAFT 5183XP

ER5183 ALUMINIUM MIG WIRE

High quality marine approved

- For GMAW welding of wrought and cast aluminium alloys containing magnesium
- Superior surface cleanliness for improved resistance to porosity



P/N:	Description	UOM	RRP (Exc. GST)	RRP (Inc. GST)
722245	Autocraft 5183XP 1.2mm 7kg	KG	\$46.00	\$50.60

STOODY 965-G

HARD FACING WIRE 1.2mm 4.5kg

Now in 4.5kg D200 spool

- Air hardening, crack free, martensitic steel deposit
- Resistant to hard particle abrasion and moderate impact loading



P/N:	Description	UOM	RRP (Exc. GST)	RRP (Inc. GST)
11423000	Stoody 965 G 1.2mm 4.5kg	PK	\$299.70	\$329.67

SUPRE GOUGE

GOUGING CARBONS

A new CIGWELD branded gouging rod at a lower cost and great quality

- Superior arc stability
- Able to removal metal from a wide range of common ferrous & non-ferrous metals
- CIGWELD's high efficiency gouging carbon takes carbon technology and performance to a new level
- The improved outer strength of these carbons allows for additional stick out length
- Fast, clean, smooth & hassle free gouging



P/N:	Description	RRP (Exc. GST)	RRP (Inc. GST)
22035003	Supre Gouge 4.8mm Carbon Pointed	\$37.38	\$41.12
22045003	Supre Gouge 6.5mm Carbon Pointed	\$24.92	\$27.41
22055003	Supre Gouge 8.0mm Carbon Pointed	\$29.92	\$32.91
22065003	Supre Gouge 9.5mm Carbon Pointed	\$38.25	\$42.08
22075003	Supre Gouge 12.7mm Carbon Pointed	\$158.28	\$174.11
24106003	Supre Gouge 16.0mm Carbon Jointed	\$79.13	\$87.04
24126003	Supre Gouge 19.0mm Carbon Jointed	\$59.85	\$65.84

NEXT-GEN

METAL-COR 3

METAL CORED SEAMED GRADE 3 WIRE

Low cost and great quality

- Very low slag formation
- Outstanding low temperature impact properties
- High deposition efficiency
- High deposition rates
- Precision layer wound



P/N:	Description	UOM	RRP (Exc. GST)	RRP (Inc. GST)
722909	Metal-Cor 3 1.2mm 15kg	KG	\$9.10	\$10.01
722910	Metal-Cor 3 1.6mm 15kg	KG	\$9.10	\$10.01

NEXT-GEN

VERTI-COR 308LT, 309LT, 316LT & 2209

ALL STAINLESS MIG AND TIG WIRES

Low cost and great quality

- Vacuum sealed in aluminised plastic packs
- Formulated for CO₂ or Argon + 18-25% CO₂ shielding gases
- High deposition rate welding of stainless steels
- All positional capabilities
- Vacuum packed



P/N:	Description	UOM	RRP (Exc. GST)	RRP (Inc. GST)
722889	Verti-Cor 308LT 1.2mm, 15kg	KG	\$56.84	\$62.52
722881	Verti-Cor 309LT 1.2mm, 15kg	KG	\$61.24	\$67.36
722882	Verti-Cor 309LT 1.6mm, 15kg	KG	\$61.86	\$68.05
722885	Verti-Cor 316LT 1.2mm, 15kg	KG	\$67.86	\$74.65
722930	Verti-Cor 2209 1.2mm, 15kg	KG	\$53.30	\$58.63

NEXT-GEN

VERTI-COR XP

E71T-1 FLUX CORED WIRE

Low cost and great quality

- Versatile, smooth running, general purpose, rutile type flux cored wire
- Excellent operator appeal
- All positional capabilities
- Vacuum packed



P/N:	Description	UOM	RRP (Exc. GST)	RRP (Inc. GST)
720915	Verti-Cor XP 1.2mm 15kg	KG	\$8.58	\$9.44
720917	Verti-Cor XP 1.6mm 15kg	KG	\$8.45	\$9.30

WELD EM12K

SUB ARC / FLUX RANGE

Low cost and great quality

- Copper-coated, unalloyed wire for submerged arc welding
- Increased Si content in order to increase the fluidity of the molten pool
- For structural steels, pressure vessel steels, fine grained steels



P/N:	Description	UOM	RRP (Exc. GST)	RRP (Inc. GST)
2312250920	Weld EM12K 2.5mm 25kg	KG	\$5.60	\$6.16
2312320920	Weld EM12K 3.2mm 25kg	KG	\$5.10	\$5.61
2312400920	Weld EM12K 4.0mm 25kg	KG	\$5.00	\$5.50

ESAB FB-55 FLUX

EN ISO 14174: S A FB 1 55 AC H5

Matches OK Flux 10.62

- Highly basic flux, it doesn't transfer Si and Mn to the weld metal
- Low alloy & high strength steel welding
- Surface forming and slag removal performance, superior arc stability, with high current carrying capacity



P/N:	Description	UOM	RRP (Exc. GST)	RRP (Inc. GST)
1755H00S00	Weld FB-55 1000kg Big Bag	PK	\$6,150.00	\$6,765.00

WELD AB-68

SUBMERGED ARC WELDING FLUX

High Impact Toughness Values

- Agglomerated aluminate-basic flux for Submerged Arc Welding
- General purpose flux with excellent welding performance, suitable for all kinds of steels
- Fits to a large range of SAW wires
- Designed for single and multi wire procedures, for butt and fillet welds



P/N:	Description	UOM	RRP (Exc. GST)	RRP (Inc. GST)
1768000S0M	Weld AB-68 25kg Bag	KG	\$5.90	\$6.49

BLUEJET™ GAS KITS

The BlueJet Gas Cutting and Welding Kits have been designed for general-purpose Oxygen - Acetylene/LPG cutting and welding applications. As with all gas equipment manufactured by CIGWELD, the items in these kits have been carefully designed to provide the highest quality performance and to ensure they comply with the stringent Australian Standards (where applicable). With a robust and purpose-built toolkit, all the equipment and accessories are well protected. These kits offer great value for the most discerning budget-conscious buyer.

- Kit conforms to AS4839
- Multi-fueled torch
- Comfortable grip handle
- Tough, solid brass construction
- Excellent flame stability
- Flashback resistant mixer
- High flow oxygen cutting valve
- Torch profile gives excellent job visibility
- Ideal for the tradesman, contractor, and handyman



TRADESMAN OXYGEN/ACETYLENE

- Oxygen Regulator SI
- Acetylene Regulator VI
- Blowpipe
- Cutting Attachment
- Mixer Type 550
- Torch Mount Flashback Arrestor Set
- Regulator Mount Flashback Arrestor Set
- Fitted Twin Hose 5m OXY/Acet
- Cutting Nozzle 41 Size 8
- Cutting Nozzle 41 Size 12
- Welding Tip 551 Size 10
- Welding Tip 551 Size 12
- Lift-Front Gas Welding Goggles
- Flint Lighter
- Combination Spanner
- Tip Cleaner
- Heavy-Duty Stainless Toolbox

P/N:	Description	RRP (Exc. GST)	RRP (Inc. GST)
208001	Tradesman Oxy/Acet	\$447.27	\$492.00



TRADESMAN PLUS OXYGEN/ACETYLENE

- Oxygen Regulator SI
- Acetylene Regulator VI
- Blowpipe
- Cutting Attachment
- Mixer Type 550
- Torch Mount Flashback Arrestor Set
- Regulator Mount Flashback Arrestor Set
- Fitted Twin Hose 10m OXY/Acet
- Cutting Nozzle 41 Size 8
- Cutting Nozzle 41 Size 12
- Cutting Nozzle 41 Size 15
- Welding Tip 551 Size 10
- Welding Tip 551 Size 12
- Welding Tip 551 Size 15
- Welding Tip 551 Size 20
- Lift-Front Gas Welding Goggles
- Flint Lighter
- Combination Spanner
- Tip Cleaner
- Roller Guide
- Radius Bar and Pivot
- Heavy-Duty Stainless Toolbox

P/N:	Description	RRP (Exc. GST)	RRP (Inc. GST)
208007	Tradesman Plus Oxy/Acet	\$517.27	\$569.00



TRADESMAN OXYGEN/LPG

- Oxygen Regulator SI
- LPG Regulator SI
- Blowpipe
- Cutting Attachment
- Mixer Type 550
- Torch Mount Flashback Arrestor Set
- Regulator Mount Flashback Arrestor Set
- Fitted Twin Hose 5m OXY/LPG
- Cutting Nozzle 44 Size 8
- Cutting Nozzle 44 Size 12
- Brazing Tip 554 Size 8
- Brazing Tip 554 Size 15
- Lift-Front Gas Welding Goggles
- Flint Lighter
- Combination Spanner
- Tip Cleaner
- Heavy-Duty Stainless Toolbox

P/N:	Description	RRP (Exc. GST)	RRP (Inc. GST)
208011	Tradesman Plus Oxy/Acet	\$447.27	\$492.00



TRADESMAN PLUS OXYGEN/LPG

- Oxygen Regulator SI
- LPG Regulator SI
- Blowpipe
- Cutting Attachment
- Mixer Type 550
- Torch Mount Flashback Arrestor Set
- Regulator Mount Flashback Arrestor Set
- Fitted Twin Gas Hose 10m OXY/LPG
- Cutting Nozzle 44 Size 8
- Cutting Nozzle 44 Size 12
- Cutting Nozzle 44 Size 15
- Brazing Tip 554 Size 8
- Brazing Tip 554 Size 15
- Lift-Front Gas Welding Goggles
- Flint Lighter
- Combination Spanner
- Tip Cleaner
- Roller Guide
- Radius Bar and Pivot
- Heavy-Duty Stainless Toolbox

P/N:	Description	RRP (Exc. GST)	RRP (Inc. GST)
208021	Tradesman Oxy/Acet	\$517.27	\$569.00

BLUEJET™ GAS PACKS AND SLABS



4-PACK OXYGEN/ACETYLENE

- Oxygen Regulator SI
- Acetylene Regulator VI
- Blowpipe
- Cutting Attachment

P/N:	Description	RRP (Exc. GST)	RRP (Inc. GST)
208026P4	4-Pack Oxy/Acet	\$228.18	\$251.00



4-PACK OXYGEN/LPG

- Oxygen Regulator SI
- LPG Regulator SI
- Blowpipe
- Cutting Attachment

P/N:	Description	RRP (Exc. GST)	RRP (Inc. GST)
208027P4	4-Pack Oxy/LPG	\$228.18	\$251.00



6-PACK OXYGEN/ACETYLENE

- Oxygen Regulator SI
- Acetylene Regulator VI
- Blowpipe
- Cutting Attachment
- Torch Mount Flashback Arrestor Set
- Regulator Mount Flashback Arrestor Set

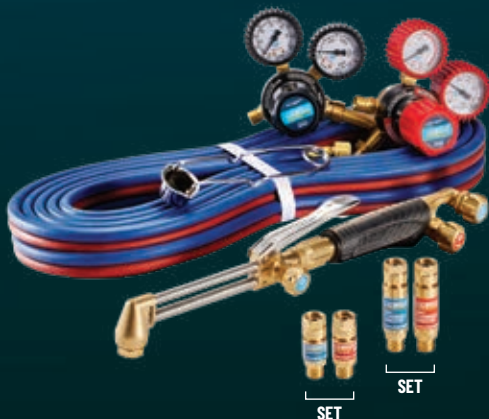
P/N:	Description	RRP (Exc. GST)	RRP (Inc. GST)
208026P6	6-Pack Oxy/Acet	\$341.82	\$376.00



6-PACK OXYGEN/LPG

- Oxygen Regulator SI
- LPG Regulator SI
- Blowpipe
- Cutting Attachment
- Torch Mount Flashback Arrestor Set
- Regulator Mount Flashback Arrestor Set

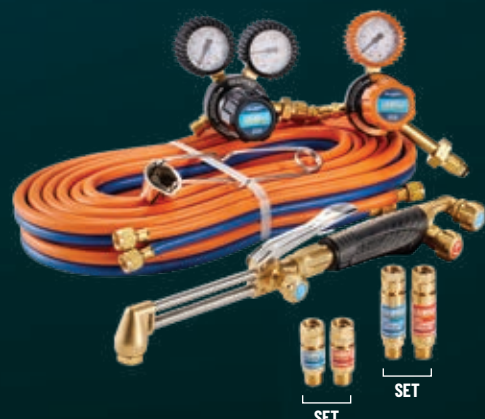
P/N:	Description	RRP (Exc. GST)	RRP (Inc. GST)
208027P6	6-Pack Oxy/LPG	\$341.82	\$376.00



GAS SLAB OXYGEN/ACETYLENE

- Oxygen Regulator SI
- Acetylene Regulator VI
- Blowpipe
- Cutting Attachment
- Torch Mount Flashback Arrestor Set
- Regulator Mount Flashback Arrestor Set
- Fitted Twin Gas Hose 10m OXY/ACET
- Flint Lighter

P/N:	Description	RRP (Exc. GST)	RRP (Inc. GST)
208026SL	Gas Slab Oxy/Acet	\$377.27	\$415.00



GAS SLAB OXYGEN/LPG

- Oxygen Regulator SI
- LPG Regulator SI
- Blowpipe
- Cutting Attachment
- Torch Mount Flashback Arrestor Set
- Regulator Mount Flashback Arrestor Set
- Fitted Twin Gas Hose 10m OXY/LPG
- Flint Lighter

P/N:	Description	RRP (Exc. GST)	RRP (Inc. GST)
208027SL	Gas Slab Oxy/LPG	\$377.27	\$415.00

BLUEJET REGULATORS

- Conform to Australian Standard AS4267
- Robust alloy bonnet and brass fittings
- Factory set optimal delivery pressure
- Ergonomic knobs ensure precise gas adjustment
- Captive control knob prevents loss and tampering
- Failsafe against over pressure
- Diaphragm is protected against flashback
- Robust, failsafe, and accurate pressure gauges
- Color coded for gas identification
- Ideal for the Tradesman, Contractor, and Handyman
- 5-Year Warranty



LPG
P/N: 201003



CO2
P/N: 201008



P/N: 210222 P/N: 201000
OXYGEN



P/N: 210254 P/N: 201019
ARGON



P/N: 210223
ACETYLENE



P/N: 201021
PRESET ARGON

MODEL	MAX WORKING PRES/FLOW	INLET CONNECTION	PART NUMBER
Oxygen	1000 kPa	Type 10 VI	210222
Oxygen	1000 kPa	Type 10 SI	201000
Acetylene	150 kPa	Type 20 VI	210223
LPG	400 kPa	CGA 510 SI	201003
Argon	45 L/min	Type 10 VI	210254
Argon	45 L/min	Type 10 SI	201019
Argon	Preset 200 kPa	Type 10 VI	201021
CO2	20 L/min	Type 30 SI	201008

P/N:	Description	RRP (Exc. GST)	RRP (Inc. GST)
210222	Oxy Regulator, 1,000kPa, Type 10 VI	\$68.18	\$75.00
201000	Oxy Regulator, 1,000kPa, Type 10 SI	\$68.18	\$75.00
210254	Arg Regulator, 45 L/min, Type 10 VI	\$68.18	\$75.00
201019	Arg Regulator, 45 L/min, Type 10 SI	\$68.18	\$75.00
201021	Arg Regulator, Preset 200kPa, Type 10 VI	\$68.18	\$75.00
210223	Acet Regulator, 150kPa, Type 20 VI	\$68.18	\$75.00
201003	LPG Regulator, 400kPa, CGA 510 SI	\$68.18	\$75.00
201008	CO2 Regulator, 20 L/min, Type 30 SI	\$68.18	\$75.00



BLOWPIPE & CUTTING ATTACHMENT



BLOWPIPE

The BlueJet blowpipe is suited for fusion welding, braze welding, brazing, soldering, heating, hand cutting, sheet metal cutting, rivet cutting, powder facing, and flame cleaning when used with the right accessories. From the tiniest welding tip to the biggest heating tip, the two-stage valve provides perfect gas control. Fine sensitivity control is possible for delicate welding applications.

- Contoured handle design provides comfortable grip
- Left hand/right hand threads ensure correct connection of gas supply
- Color coded control knobs are fitted for maximum safety
- Locking teeth provide secure positioning of attachments with hand tightening
- Ideal for the tradesman, contractor, and handyman

SPECIFICATIONS

Gas Consumption (Fuel) :	41-55 l/min		
Gas Consumption (Oxy):	45-58 l/min		
Heat Output :	180 MJ/HR		
P/N:	Description	RRP (Exc. GST)	RRP (Inc. GST)
204001	Blowpipe	\$50.00	\$55.00



CUTTING ATTACHMENT

The BlueJet cutting attachment is a lower-cost alternative to the COMET series. These high-quality cutting attachments are built to strict internal technical requirements.

- Attaches quickly and easily to BlueJet blowpipe by hand
- Locking teeth provide secure positioning
- O-ring provides a gas tight seal with hand tightening of attachment
- Cutting lever positioned for ease of operation
- Solid brass construction
- Universal multi-fuel mixer allows for cutting with Oxy/Acetylene or Oxy/LPG
- For use with Type 41 & 44 cutting nozzles

SPECIFICATIONS

Gas Consumption (Fuel) :	41-55 l/min		
Gas Consumption (Oxy) :	45-58 l/min		
Heat Output :	180 MJ/HR		
P/N:	Description	RRP (Exc. GST)	RRP (Inc. GST)
204005	Cutting Attachment	\$56.36	\$62.00



MIXER TYPE 550

Compatible with: BlueJet Blowpipe P/N: 204001 and BlueJet Welding/Brazing Tips.

P/N:	Description	RRP (Exc. GST)	RRP (Inc. GST)
204036	Mixer Type 550	\$19.09	\$21.00

CUTTING NOZZLES

- **Type 41** - single piece construction - made from copper for heat resistance
- **Type 44 (LPG)** - two-piece construction - copper outer with brass inner
- Suit BlueJet Cutting Attachment
- Economical & Cost Effective



TYPE 41 CUTTING NOZZLES (OXYGEN/ACETYLENE)

P/N:	Size	Cutting Thickness (mm)	Fuel Gas Flow L/Min @100Kpa	Total Oxygen Flow & Pressure L/Min (@kPa)	RRP (Exc. GST)	RRP (Inc. GST)
206046	6	1-6	2	11 (200)	\$10.00	\$11.00
206047	8	6-10	3.5	20 (200)	\$10.00	\$11.00
206048	12	12-20	4	38 (200)	\$10.00	\$11.00
206049	15	25-75	7	75 (350)	\$10.00	\$11.00
206050	20	100-125	9	134 (400)	\$10.00	\$11.00

TYPE 44 CUTTING NOZZLES (OXYGEN/LPG)

P/N:	Size	Cutting Thickness (mm)	Fuel Gas Flow L/Min @100Kpa	Total Oxygen Flow & Pressure L/Min (@kPa)	RRP (Exc. GST)	RRP (Inc. GST)
206025	6	3-6	2	17 (200)	\$10.91	\$12.00
206026	8	6-12	3.5	30 (200)	\$10.91	\$12.00
206028	12	12-20	4.4	58 (250)	\$10.91	\$12.00
206029	15	25-75	5.5	99 (400)	\$10.91	\$12.00
206030	20	100-125	6.5	171 (400)	\$10.91	\$12.00
206086	24	150-200	9	256 (500)	\$13.64	\$15.00
206087	32	225-300	14	456 (600)	\$13.64	\$15.00
206088	48	300-350	20	556 (700)	\$13.64	\$15.00

GOUGING NOZZLES

- Ideal for back "gouging" welds or defects prior to back fill
- High speed
- Available in straight and bent nozzle design
- Bent nozzles allow for easier gouging in horizontal positions



TYPE 41 GOUGING NOZZLES (OXYGEN/ACETYLENE)

P/N:	Size	Fuel Gas Flow L/Min @100Kpa	Total Oxygen Flow & Pressure L/Min (@kPa)	RRP (Exc. GST)	RRP (Inc. GST)
206089	32GB	15	61 (500)	\$30.00	\$33.00
206090	48GB	18	85 (600)	\$32.73	\$36.00
206093	32GS	15	61 (500)	\$26.36	\$29.00

TYPE 44 GOUGING NOZZLES (OXYGEN/LPG)

P/N:	Size	Fuel Gas Flow L/Min @100Kpa	Total Oxygen Flow & Pressure L/Min (@kPa)	RRP (Exc. GST)	RRP (Inc. GST)
206091	32GB	12	94 (500)	\$30.00	\$33.00
206092	48GB	13	120 (600)	\$32.73	\$36.00
206094	32GS	12	94 (500)	\$26.36	\$29.00

WELDING/ BRAZING TIPS

- Manufactured from copper, capable of welding mild steel (Oxygen/Acetylene only) and brazing (various materials)
- Each welding tip is individually swaged to ensure proper alignment for uniform flame, sizing, and free-flow contour
- Flame tested to ensure optimum quality and performance



TYPE 551 WELDING TIPS (OXYGEN/ACETYLENE)

P/N:	Size	Steel Thickness (mm)	Pressure (kPa) Oxygen	Pressure (kPa) Acet	Consumption Each Gas (l/min)	RRP (Exc. GST)	RRP (Inc. GST)
207010	4	0.9	50	50	1.5	\$10.00	\$11.00
207011	6	1.2	50	50	1.5	\$10.00	\$11.00
207012	8	2	50	50	2	\$10.91	\$12.00
207013	10	2.6	50	50	3	\$10.91	\$12.00
207014	12	3.2-4	50	50	4	\$10.91	\$12.00
207015	15	5-6.5	50	50	6.5	\$10.91	\$12.00
207016	20	8.2-10	50	50	12	\$12.73	\$14.00
207017	26	13-19	50	50	22	\$12.73	\$14.00
207018	32	25	100	50	38	\$12.73	\$14.00

TYPE 554 BRAZING TIPS (OXYGEN/LPG)

P/N:	Size	Steel Thickness (mm)	Pressure (kPa) Oxygen	Pressure (kPa) Acet	RRP (Exc. GST)	RRP (Inc. GST)
207019	8	2	50	50	\$10.91	\$12.00
207020	15	5.0-6.5	50	50	\$10.91	\$12.00

LPG EXPANSION BURNERS

- The burner torch head is constructed of stainless steel for added durability, providing longevity to the equipment reducing the need for replacement or repairs
- The left-hand thread for gas type identification provides a simple and efficient way to avoid cross-connections between incompatible gases, ensuring a safer working environment
- The torch handle is constructed with solid internal brass construction with an aluminum outer handle for added durability and provides an extra layer of protection and corrosion resistance, ensuring long-lasting use and convenience
- LPG supplied in Australia in Cylinder form is mainly Propane with a high purity rate of between 95-99% propane

- The handle design ensures comfort and ease of use when using the Expansion Heating Torch. The torch can be operated perfectly from a 45° to 90° angle
- The adjustable flame control provides versatility and convenience, allowing the user to tackle different tasks with a single heating torch, no matter the application's requirements
- Approximate Heating Temperature of Propane in Air = 1,980°C
- The Expansion Burner works in a unique fashion by taking the cold LP-Gas from the cylinder (-45°C) and running it around the burner head so the gas warms up prior to mixing with the Air (that includes Oxygen) which provides for a much better mixture of Fuel Gas (LPG) and Oxygen to produce a more efficient blue heating flame

APPLICATIONS:

- Preheating steel/metals prior to welding applications
- Heating steel/metals prior to bending and hardening processes
- Metal repairs, maintenance and unfreezing parts
- Controlling inter-pass temperature during welding operations
- Line marking on roadways
- Heating & joining waterproofing membranes

XB50 LPG EXPANSION BURNER 50mm HEAD

- LPG/Propane supplied in Australia contains approximately 50.4 MJ (Megajoules) of energy for every 1kg of gas consumed
- The XB50 will run for approximately 4.5hrs on a 45kg LPG cylinder or ~50 minutes on an 8.5kg BBQ cylinder

SPECIFICATIONS

Burner head diameter	50mm
Flame Length	600mm
Heat output	500MJ/hr (474,000 BTU/hr @200kPa LPG)
Thread	3/8" - BSP RH
Operating Angle	45° to 90°
Dimensions L x W x H	460mm x 80mm x 70mm
Weight	0.510kg



XB75 LPG EXPANSION BURNER 75mm HEAD

- The XB75 will run for approximately 1hr 44mins on a 45kg LPG cylinder or ~20 minutes on an 8.5kg BBQ cylinder
- For extended use CIGWELD recommend that multiple (2+) 45kg LPG cylinders be manifolded together to supply the XB75 burner head

SPECIFICATIONS

Burner head diameter	75mm
Flame Length	800mm
Heat output	1300MJ/hr (1,232,000 BTU/hr @200kPa LPG)
Thread	3/8" - BSP RH
Operating Angle	45° to 90°
Dimensions L x W x H	460mm x 100mm x 90mm
Weight	0.905kg



XB TORCH LPG EXPANSION BURNER TORCH HANDLE WITH VALVE

SPECIFICATIONS

Thread	3/8" - BSP RH & 5/8"-18 UNF LH
Dimensions L x W x H	210mm x 20mm x 45mm
Weight	0.335kg



XB VALVE LPG EXPANSION BURNER VALVE

SPECIFICATIONS

Thread	3/8" - BSP RH & 5/8"-18 UNF LH
Dimensions L x W x H	50mm x 20mm x 40mm
Weight	0.110kg



XB50 KIT



XB75 KIT



P/N:	Description	RRP (Exc. GST)	RRP (Inc. GST)
308416	BlueJet XB50 LPG Expansion Burner Head 50mm	\$118.18	\$130.00
308417	BlueJet XB75 LPG Expansion Burner Head 75mm	\$159.09	\$175.00
308418	BlueJet XB LPG Expansion Burner Torch Handle with Valve	\$59.09	\$65.00
308419	BlueJet XB LPG Expansion Burner Valve	\$31.82	\$35.00
308420	BlueJet LPG Expansion Burner 50mm kit	\$348.18	\$383.00
308421	BlueJet LPG Expansion Burner 75mm kit	\$381.82	\$420.00

BLUEJET™



COMET FLASHBACK ARRESTORS

REGULATOR AND TORCH MOUNT



The COMET range of Flashback Arrestors provide the perfect option for those looking to safeguard against flashbacks, backfires and sustained backfires, in a situation where extremely high gas flows are not required.

- Features Flame Arrestor and Non-return valve prevents chance of injury resulting from flashback, backfire and sustained backfire.
- Regulator mounted set allows for quick identification as to whether the unit is designed for Oxygen or Fuel use.
- Torch mounted set allows for quick identification as to whether the unit is designed for Oxygen or Fuel use.
- Date of manufacture stamped on body allows for quick identification as to when the unit should be replaced.
- AS 4603 compliant, Provides the highest level of safety and performance. Ensures product is suitable for contracts requiring Australian Standards compliant product.
- These FBA's are certified by UL 1357 to the following max working pressures: Acet: 15psi | Oxygen: 145psi | MPS Gas: 22psi | LP-Gas, Hydrogen, Natural Gas, Methane: 50psi
- It complies to ISO 5175 Gas welding equipment - Safety devices - Part 1: Devices incorporating a flame (flashback) arrestor.

P/N:	Description	RRP (Exc. GST)	RRP (Inc. GST)
208512	Torch Mount Oxy/Fuel Set	\$61.82	\$68.00
208513	Regulator Mount Oxy/Fuel Set	\$68.18	\$75.00
208514	Torch Mount Oxy	\$30.91	\$34.00
208515	Torch Mount Fuel	\$30.91	\$34.00
208516	Regulator Mount Oxy	\$35.45	\$39.00

P/N:	Description	RRP (Exc. GST)	RRP (Inc. GST)
208517	Regulator Mount Fuel	\$35.45	\$39.00
208518	Torch Mount Mid Flow Oxy/Fuel Set	\$119.09	\$131.00
208519	Torch Mount Mid Flow Oxy	\$60.91	\$67.00
208520	Torch Mount Mid Flow Fuel	\$60.91	\$67.00



HANDLING EQUIPMENT

2-AXIS POSITIONERS

Applications include the positioning of fabricated metal components and structures ready for welding in the horizontal or down-hand positions, which enables easier and faster welding speeds using semi-automatic or robotic welding installations. Weld quality and speed is increased and importantly weld defects are reduced and overall production costs are lowered. Used extensively in Pressure Vessel and Pipe Fitting workshops, fuel tank, mining machinery, transport, off-road equipment, wind tower, military and ship building industries. Improve your weld quality by positioning the weld joint in the same place, time after time, with comfortable reach and excellent visibility. ESAB Welding positioners facilitate consistent, repeatable assembly procedures to lower your overall production costs

- 2-Axis Positioners are ideal for rotating and tilting workpieces
- Speed is stepless adjustable
- ESAB Positioners exceed the strictest international ISO safety requirements
- CE Compliant
- Optimized motor and gear drive sizes
- 2-Axis operation guarantees ideal ergonomic working positions
- Designed for easier mechanical and electrical maintenance



SPECIFICATIONS

Description	HBW150-2-LLP-S	HBW300-2-LLP-S	HBW600-2-LLP-S
Loading capacity, kg	150	300	600
Max. rotation torque, Nm	100	450	900
Eccentricity, mm	65	150	150
Driving motor, kW	0.15 DC	0.4 DC	0.37 AC
Turning speed, rpm	0.25-5.5	0.25-4	0.16-1.6 at 5-50Hz
Max. tilt torque, Nm	Manual	Manual	1500
Tilting offset from table, mm	Manual	Manual	250
Tilting speed, rpm	Manual	Manual	0.35
Tilting range, deg	0-90	0-135	0-135
Turn table diameter, mm	380	560	700
Number of slots and width, mm	4x12	4x16	4x16
Max. turning diameter at 90°, mm	670	940	1250
Table height from floor, mm	436	606	806
Earthing current, A	500	500	500
Control inputs	Electrical panel + Foot pedal		Electrical panel + Pendant
Pendant cable length, m	/		10
Input power supply	220V +/- 10% 50 Hz +/- 1% 0.3kW	220V +/- 10% 50Hz +/- 1% 0.5kW	380/400/415, 50HZ, 1.0KW 440/460/480, 60HZ, 1.0KW
IP rating	IP23	IP23	IP54
PEK kits	N	N	Y
Sync kits	N	N	N
CE compliance	Y	Y	Y
Control voltage, V	24	24	24
Weight, kg	90	200	550

P/N:	Description	RRP (Exc. GST)	RRP (Inc. GST)
W0000U0101	150kg Positioner HBW150-2-LLP-S	\$5,236.36	\$5,760.00
W0000U0102	300kg Positioner HBW300-2-LLP-S	\$8,125.45	\$8,938.00
W0000T0613	600kg Positioner HBW600-2-LLP-S	\$13,541.82	\$14,896.00

ROLLER BEDS

- Widely used for automatic welding of pipes, vessels and support towers
- Each set is comprised of one power roller and one idler roller bed
- The machine is designed with a speed controller, so speed variation can be altered continuously
- Work piece rotates smoothly, ideal for manual welding, automatic pipe welding and automatic SAW welding etc
- Forward-Stop-Reverse, Speed Control are standard
- Foot Pedal is supplied



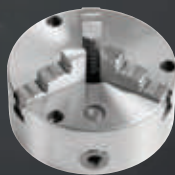
SPECIFICATIONS

Description	LLR-1000P-S	LLR-1000I-S
Max drive capacity	1000kg	1000kg
Work piece diameter	Ø115 - Ø400mm	Ø115 - Ø400mm
Rotation degree	±360° x N	±360° x N
Wheel diameter	Ø250mm	Ø250mm
Wheel linear speed*	200-2000mm/min	200-2000mm/min
Driving Motor	150W, DC90V, 1800rpm	150W, DC90V, 1800rpm
Power	220VAC±10%, 50Hz±1%, 0.3KW	-
Size (L x W x H)	610 x 280 x 310mm	-
Weight	50kg	32kg

*Max rotational torque in rotational speed range 100% - 10% of max speed

P/N:	Description	RRP (Exc. GST)	RRP (Inc. GST)
WE61000003	1,000kg Power Roller Bed LLR-1000P-S	\$4,152.73	\$4,568.00
WE61000004	1,000kg Idler Roller Bed LLR-1000I-S	\$1,228.18	\$1,351.00

3 JAW CHUCKS



SPECIFICATIONS

Description	K11-160	K11-320	WP-400
Size, D	160mm	320mm	400mm
Clamping Range, A-A1	3-55mm	10-145mm	120-250mm
Clamping Range, B-B1	50-160mm	95-320mm	-
Clamping Range, C-C1	55-145mm	110-320mm	250-380mm
Chuck Body Thickness	65mm	90mm	45mm
Mounting Thread	3-M8	3-M16	3-M10

P/N:	Description	RRP (Exc. GST)	RRP (Inc. GST)
WE02573034	160mm 3-Jaw Chuck K11-160	\$866.36	\$953.00
WE02573036	320mm 3-Jaw Chuck K11-320	\$1,805.45	\$1,986.00
WE02573031	400mm 3 Jaw Chuck WP-400	\$1,173.64	\$1,291.00



CUTMASTER+

PLASMA CUTTERS

ESAB Cutmaster+ series offers the perfect combination of power and portability for hand-held plasma cutting machines. Plus means more, so we've added a user-friendly 4.3in. TFT LCD screen and we've also upgraded the power of the machine to provide more control and flexibility so you can master any genuine cutting with ease. Together with the SL60 ITorch, it all adds up to the total plasma cutting package.

CUTMASTER
40+



CUTMASTER
50+



CUTMASTER
70+



SPECIFICATIONS

Amperage Output	10 – 40A, continuously adjustable	15 – 50A, continuously adjustable	15 – 70A, continuously adjustable
Recommended Generator Size	8kW (or higher)	12kW (or higher)	20kW (or higher)
Genuine Cutting & Pierce Capacity	12mm*	16mm*	20mm*
Regular Hand Cutting Capacity	16mm*	25mm*	30mm*
Maximum Severance Cut Capacity	25mm*	32mm*	38mm*
Open Circuit Voltage (OCV)	298V	315V	315V
Input Voltage	230VAC +/- 10%, 50/60Hz, 1ph	400VAC +/- 15%, 50/60Hz, 3ph	400VAC +/- 15%, 50/60 Hz, 3ph
Rated Duty Cycle @ 40°C	40% @ 40A 100% @ 20A	60% @ 50A 100% @ 40A	50% @ 70A 100% @ 50A
Recommended Circuit Breaker Size (at Maximum Cut Capacity)	15A	25A	32A
Amperage Draw (at Maximum Cut Capacity)	27A @ 230V	15.5A	21A
Power Factor at Max Current	0.98	-	-
Input Power Cable and Plug	3m 1ph 2.5mm ² 15A AU plug	3m, 4.0mm ² without plug	3m 4.0mm ² without plug
Work Lead with Ground Clamp	3m 10mm ² work cable with 25mm ² connection	3m 10mm ² work cable with 25mm ² connection	3m 10mm ² work cable with 25mm ² connection
Gas Requirements	Compressed air (Clean & Dry)	Compressed air (Clean & Dry)	Compressed air (Clean & Dry)
Operating Temperature Range	-10°C to + 50°C	-10°C to + 50°C	-10°C to + 50°C
Compressed Air Pressure Requirements	90 – 125psi (6.2 – 8.6bar) (0.62 – 0.86Mpa)	90 – 125psi (6.2 – 8.6bar) (0.62 – 0.86Mpa)	90 – 125psi (6.2 – 8.6bar) (0.62 – 0.86Mpa)
Compressed Air Flow Requirement	142 – 235 l/min	142 – 235 l/min	142 – 235 l/min
SL60 Torch Duty Cycle	100% @ 60A with 165 l/min air flow	100% @ 60A with 165 l/min air flow	100% @ 60A with 165 l/min air flow
Torches – for use with Cutmaster 40+ (compatible with all Torch ATC torch connections)	SL60 Torch (supplied)	SL60 Torch (supplied)	SL60 ITorch (supplied)
Enclosure Class	IP23S	IP23S	IP23S
Certifications	CE, RCM	CE, RCM	CE, RCM
Dimensions L x W x H	465mm x 200mm x 315mm	465mm x 200mm x 315mm	465mm x 200mm x 315mm
Weight	11.5kg	16kg	16kg

*All Cutting Capacity data quoted is based on cutting Mild Steel.

P/N:	Description	RRP (Exc. GST)	RRP (Inc. GST)
559141006	ESAB Cutmaster 40+	\$2,886.36	\$3,175.00
559151006	ESAB Cutmaster 50+	\$3,322.73	\$3,655.00
559170006	ESAB Cutmaster 70+	\$3,854.55	\$4,240.00

CUTMASTER+



WELDING EQUIPMENT

BLUEVENOM MG130

GASLESS MIG WELDER

WHAT'S IN THE BOX

- BlueVENOM MG130 Power Source
- Gasless MIG Gun 2.2m - Direct Connect
- Work Clamp with 1.5m Lead
- Feed Roll: 0.8/0.9mm Gasless - Knurled
- Gasless Nozzle - Fitted
- Contact Tips: 0.8mm (Fitted) & 0.9mm Included
- Carry Strap
- Operating Manual

SPECIFICATIONS

Power Supply (Voltage)	Single-Phase 230V/240V +/- 10%
Australian Standard	AS 60974.1:2020
Nominal Supply Frequency	50/60Hz
Supply Lead and Plug supplied	10 Amp
Min Single Phase Generator Recommendation	6kVA (at 0.8 Power Factor) at Max Amps
Amperage Range (MIG)	30 - 130A
Voltage Range (MIG)	10.5 - 23.5V
MIG (GMAW) Duty Cycle @ 40°C, 10 minutes	130 Amps @ 20%, 75 Amps @ 60%, 58 Amps @ 100%



SYNERGIC GASLESS MIG

Nominal DC Open Circuit Voltage in MIG Mode	43V
Weight of Power Source	4.5kg
Power Source Dimensions (mm)	L: 350 x W: 140 x H: 225
Protection Class	IP21S

P/N:	Description	RRP (Exc. GST)	RRP (Inc. GST)
W1202130	BlueVENOM MG130	\$317.27	\$349.00

130A
POWER

SYNERGIC MIG
WITH PLATE THICKNESS SELECTION

230/240V 10A
PLUG & PLAY

LIGHT
WEIGHT

2 YEAR
WARRANTY

BLUEVENOM XF186

MULTI PROCESS WELDING INVERTER

WHAT'S IN THE BOX

- BlueVENOM XF186 Power Source
- MIG Gun 3m - Euro quick connector
- Work Clamp with 3m Lead
- Twist Lock Electrode Holder with 3m Lead
- 2 x Feed Rolls: 0.8/0.9mm Gasless,
- 0.8/0.9mm Solid Wires (Fitted).
- 2m Argon Gas Hose and Gas Regulator/Flowmeter
- Includes Nylon Inlet Guide for use on Soft Alloy Wires
- Operating Manual

SPECIFICATIONS

Power Supply (Voltage):	Single-Phase 230V/240V +/-10%
Australian Standard:	AS 60974.1:2020
Frequency Hertz:	50/60Hz
Supply Lead and Plug supplied:	10 Amp Plug
Generator Rating:	10 kVA (at 0.8 Power Factor) at Max Amps
Amperage Range (MIG):	30 - 186A
Voltage Range:	10.0 - 26.0V
MIG (GMAW) Duty Cycle @ 40°C, 10 minutes:	185 Amps @ 9%, 72 Amps @ 60%, 56 Amps @ 100%
STICK (MMAW) Duty Cycle @ 40°C, 10 minutes:	160 Amps @ 10%, 65 Amps @ 60%, 50 Amps @ 100%



MIG / STICK / TIG

DC LIFT TIG (GTAW) Duty Cycle @ 40°C, 10 minutes:	186 Amps @ 10%, 76 Amps @ 60%, 59 Amps @ 100%
Nominal DC Open Circuit Voltage in MIG Mode:	52V
Open Circuit Voltage (VRD On) STICK Mode:	<35V
Weight of Power Source:	10kg
Power Source Dimensions (mm)	L: 465 x W: 190 x H: 340
Protection Class:	IP21S

P/N:	Description	RRP (Exc. GST)	RRP (Inc. GST)
W1400186	BlueVENOM XF186	\$680.91	\$749.00

186A
POWER

SYNERGIC
MIG

QUICKSET
PLATE THICKNESS CONTROL

10A (230/240V)
PLUG 'N WELD

2 YEAR
WARRANTY

BLUEVENOM XF190

MIG

STICK

TIG



MULTI PROCESS WELDING INVERTER

FEATURES:

- SYNERGIC WITH PLATE THICKNESS SELECTION
- 4.3" LED SCREEN FOR OPTIMAL CLARITY
- 2 X ROLL ALL-DRIVEN (TOP & BOTTOM) WIRE DRIVE SYSTEM
- 30% SMALLER THAN SOME OTHER MACHINES IN ITS CLASS
- LIGHTWEIGHT @ 10kg's
- OPTISTART TECHNOLOGY
- SPOOL GUN, TIG FOOT CONTROL & TIG DIAL REMOTE TORCH COMPATIBLE



WHAT'S IN THE BOX

- BlueVENOM XF190 Power Source
- CMGBZ15E3 MIG Gun 3m - Euro quick connector
- Work Clamp with 3m Lead
- Twist Lock Electrode Holder with 3m Lead
- 2 x Feed Rolls: 0.8/0.9mm Gasless, 0.8/0.9mm Solid Wires (Fitted).
- 2m Argon Gas Hose and Gas Regulator/Flowmeter
- Includes Nylon Inlet Guide for use on Soft Alloy Wires
- Operating Manual

SPECIFICATIONS

Power Supply (Voltage):	Single-Phase 230V/240V +/-15%
Australian Standard:	AS 60974.1:2020
Frequency Hertz:	50/60Hz
Supply Lead and Plug supplied:	10 Amp Plug
Generator Rating:	10 kVA (at 0.8 Power Factor) at Max Amps
Amperage Range (MIG):	30 - 190A
Voltage Range:	15.5 - 26.0V
MIG (GMAW) Duty Cycle @ 40°C, 10 minutes:	185 Amps @ 9%, 72 Amps @ 60%, 56 Amps @ 100%
STICK (MMAW) Duty Cycle @ 40°C, 10 minutes:	160 Amps @ 10%, 65 Amps @ 60%, 50 Amps @ 100%
TIG (GTAW) Duty Cycle @ 40°C, 10 minutes:	190 Amps @ 10%, 77 Amps @ 60%, 60 Amps @ 100%

Nominal DC Open Circuit Voltage in MIG Mode:	52V
Open Circuit Voltage (VRD On) STICK Mode:	<35V
Weight of Power Source:	9.5Kg
Power Source Dimensions (mm):	L: 465 x W: 190 x H: 340
Weight of Full Package:	16.6Kg
Full Package Dimensions (mm):	L: 530 x W: 295 x H: 345
Protection Class:	IP21S

P/N:	Description	RRP (Exc. GST)	RRP (Inc. GST)
W1400190	BlueVENOM XF190	\$817.27	\$899.00

**190A
POWER**

**3 IN 1
MULTI PROCESS**

**OPTI
START**

**AUTO SET
MIG PROCESS**

**2-ROLL
DRIVE**

**SPOOL GUN
COMPATIBLE**

BLUEVENOM XF200P3

MULTI PROCESS WELDING INVERTER

MIG

WITH SINGLE &
DOUBLE PULSE

STICK

WITH STICK PULSE

TIG

WITH TIG PULSE



★★★
READY TO
**ROCK FOR
ALUMINIUM**
OUT OF THE
BOX!
★★★



FEATURES:

- SYNERGIC WITH PLATE THICKNESS SELECTION
- TRIPLE PULSE TRANSFER MODES: SINGLE & DOUBLE PULSE MIG, PULSE STICK AND PULSE TIG
- 3.5" LED SCREEN FOR OPTIMAL CLARITY
- 2 X ROLL ALL-DRIVEN (TOP & BOTTOM) WIRE DRIVE SYSTEM
- READY TO WELD ALUMINIUM OUT OF THE BOX!
- OPTISTART TECHNOLOGY
- SPOOL GUN, TIG FOOT CONTROL & TIG DIAL REMOTE TORCH COMPATIBLE

**TRIPLE
PULSE WELDING***

**200A
POWER**

**SYNERGIC MIG
SINGLE / DOUBLE PULSE**

**QUICKSET
PLATE THICKNESS CONTROL**

SINGLE & DOUBLE PULSE MIG PULSE TIG | PULSE STICK

Get your adrenaline pumping with the new XF200P3 – a compact, robust mean machine with 3 Pulse modes: Single & Double Pulse MIG!

Ready to rock out of the box for welding Aluminium, this predator packs impressive features and welding performance made easy to suit the serious welding enthusiast to the welding pro.

Don't want to weld Aluminium? Is Steel more your thing? Don't stress – the XF200P3 comes packed with the right liner, inlet guide and feed rollers for hard wires as well.

Release your inner Welditude® with pre-installed Synergic Quickset MIG (Single & Double Pulse) programs! Simply choose your material and gas combination (unless you're using gasless), wire diameter and dial up the plate thickness you're welding and you're ready to go!

Navigate with ease through the intuitive 3.5" full colour display to custom set values to get the most out of your welds – from Voltage Trim and Adjustable Burnback to Hard and Soft start tweaks (Opti-Start Technology) the XF200P3 doesn't hold back!

Weighing a mere 13.4kg, this portable beast will have you welding in any pulse mode you like! To make things even better it's equipped with a 2x roll (cogged) all driven wire drive system for smooth and effortless wire feedability and is compatible with Spool Gun, TIG foot control and Dial Remote TIG torch!

So the question is... are you ready to Harness the Power?

**OVER 750 SYNERGIC
PLATE THICKNESS LINES**

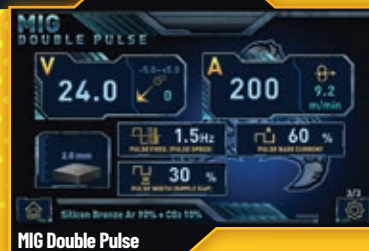
INTUITIVE USER FRIENDLY INTERFACE



Home Screen



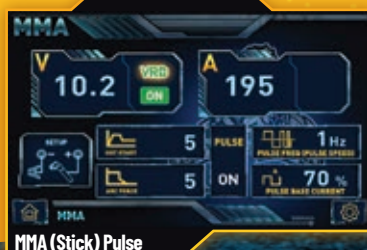
MIG Single Pulse



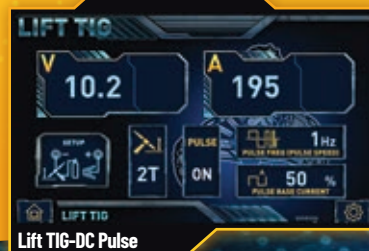
MIG Double Pulse



MIG DC Synergic



MMA (Stick) Pulse



Lift TIG-DC Pulse

CAN YOU HARNESS THE POWER?

WHAT'S IN THE BOX

- BlueVENOM XF200P3 Power Source
- MIG Gun With Euro Connection, 3m
- 300A Work Clamp, 3m Lead
- Twistlock Electrode Holder, 3m Lead
- Feed Rolls: 0.9/1.0mm U-Groove (Fitted), 0.8/0.9mm V-Groove, 0.8/0.9mm Gasless - Knurled
- Nylon Inlet Guide & Liner (Fitted) For Soft Wires Like Aluminium
- Steel Inlet Guide & Liner Included For Hard Wires (Mild Steel)
- Quick Connect Gas Hose, 2m
- Gas Regulator/Flowmeter
- Operating Manual

P/N:	Description	RRP (Exc. GST)	RRP (Inc. GST)
W1400200	BlueVENOM XF200P3	\$1,635.45	\$1,799.00

SPECIFICATIONS

Power Supply (Voltage):	Single-Phase 230V/240V +/-10%
Australian Standard:	AS 60974.1:2020
Frequency Hertz:	50/60Hz
Supply Lead and Plug supplied:	15 Amp Plug
Generator Rating:	12 kVA (at 0.8 Power Factor) at Max Amps
Amperage Range (MIG):	30 - 200A
Voltage Range (MIG Manual mode):	10.0 - 27.0V
MIG (GMAW) Duty Cycle @ 40°C, 10 minutes:	200A @ 15%, 24.0V, 100A @ 60%, 19.0V, 77A @ 100%, 17.9V
STICK (MMAW) Duty Cycle @ 40°C, 10 minutes:	195A @ 10%, 27.8V; 80A @ 60%, 23.2V; 62A @ 100%, 22.5V
Lift TIG-DC (GTAW) Duty Cycle @ 40°C, 10 minutes:	200A @ 15%, 18.0V; 100A @ 60%, 14.0V; 77A @ 100%, 13.1V
Nominal DC Open Circuit Voltage in MIG Mode:	67V
Open Circuit Voltage (VRD On) STICK Mode:	<35V
Weight of Power Source:	13.4kg
Power Source Dimensions (mm):	L: 495 x W: 220 x H: 335
Weight of Full Package:	21.7kg
Full Package Dimensions (mm):	W: 575 x H: 395 x D: 310
Protection Class:	IP21S

**15A (230/240V)
PLUG 'N WELD**

**2 YEAR
WARRANTY**



TRANSMIG 555i

AUTO SET MULTIPROCESS WELDING INVERTER PACKAGE

FEATURES:

- 555 AMP INVERTER BLOCK
- MIG/STICK/TIG AND GOUGING PROCESSES
- INCREDIBLY ENERGY EFFICIENT
- AUTO-SET PLATE THICKNESS SELECTION
- ROBUST AND DURABLE CONSTRUCTION
- 4-ROLL WIRE DRIVE SYSTEM



WHAT'S IN THE BOX

- Transmig 555i Inverter power source
- Transmig 4RX wire feeder (feed rolls 0.9/1.2mm v groove fitted)
- Interconnection lead kit, 8m
- MIG Gun Tweco Fusion 400, 3.6m
- COMET Professional Argon Regulator / Flowmeter
- Work clamp, 4m lead
- Transmig 355i/555i Trolley with inbuilt cylinder carrier
- Operating Manual



POWER REDUCING DESIGN

SPECIFICATIONS

Power Source Dimensions (mm)	L700 x W287 x H517
Power Source Weight	49kg
Cooling	Fan Cooled
Welder Type	Multi Process Inverter Power Source
Australian Standard	AS 60974.1-2020 / IEC60974-1 / EN60974-10
Number of Phases	3
Nominal Supply Voltage	415 VAC \pm 15%
Nominal Supply Frequency	50 / 60Hz
Output Terminal Type	Dinse™ Style 50
Protection Class	IP23S
Welding Environment Classification	Suitable for Welding in Category C Environments; Suitable for Indoor and Outdoor Welding
Open Circuit Voltage (VRD On)	<35 VDC
Open Circuit Voltage (VRD Off)	83 VDC
Welding Current Range (MIG Mode)	30 - 555A
Welding Current Range (GOUGING / STICK Mode)	10 - 555A

Welding Current Range (TIG Mode)	10 - 555A
Supply Lead	4 mm ²
Effective Input Current (I _{leff})	27 Amps
Maximum Input Current (I _{lmax})	41 Amps
Efficiency	92%
Idle state power	< 30W
Minimum Three Phase Generator Recommendation	35 kVA (at 0.8 Power Factor)
MIG (GMAW) Welding Output, 40°C, 10 min	555A @ 40%, 41.8V; 500A @ 60%, 39V; 400A @ 100%, 34V
STICK (MMAW) / GOUGING Welding Output, 40°C, 10 min.	555A @ 40%, 42.2V; 500A @ 60%, 40V; 400A @ 100%, 36V
TIG (GTAW) Welding Output, 40°C, 10 min.	555A @ 40%, 32.2V; 500A @ 60%, 30V; 400A @ 100%, 26V

P/N:	Description	RRP (Exc. GST)	RRP (Inc. GST)
W1400555	Transmig 555i remote plant package	\$6,163.64	\$6,780.00

555A
DC OUTPUT

3 IN 1
MULTI PROCESS

VRD
SAFETY

AUTO SET
MIG PROCESS

4-ROLL
DRIVE

PUSH-PULL
GUN COMPATIBLE

3 YEAR
WARRANTY

MIG FRONT END CONSUMABLES AND LINERS

Complete range of MIG Front End Consumables and Liners.

- All product roll marked with the CIGWELD CW logo so you know you're buying quality
- New robust and secure retail packaging
- Colour coded packaging for each Brand Type for shopping ease

Handy sized packs of 10 Contact Tips, or 2 Nozzles, Diffusers, Insulators or Tip Holders

Colour coded area, denotes Brand Type;
TW = TWECO
BZ = BINZEL Compatible
BE = BERNARD Compatible

CIGWELD Part Number

Pack quantity

Product Information and Sizing

CIGWELD Part Number

Front End Consumable Part dimensions listed - handy for the user that only has the dimensions of their part for identification

Full range listing for various sizes available.

Product size contained in pack highlighted for easy identification

Handy Part number reference chart listing CIGWELD Legacy part number and industry code

TWECO
100% BRAND TYPE

BERNARD® COMPATIBLE

BINZEL® COMPATIBLE

CIGWELD is in no way affiliated with BINZEL® or BERNARD®. The parts advertised for sale are not genuine BINZEL® or BERNARD® parts, they are replacement parts supplied by CIGWELD. Reference to BINZEL® or BERNARD® Guns, torches and numbers are for your convenience only.



MULTILINERS

CIGWELD Multiliners are available in 4 Colour Sizes;

- Blue Liner** 0.6mm to 0.9mm MIG wire sizes
- Red Liner** 0.9mm to 1.2mm MIG wire sizes
- Yellow Liner** 1.2mm to 1.6mm MIG wire sizes
- Grey Liner** 0.9mm to 1.6mm ALLOY wires



MIG GUN CONSUMABLES

Introducing the all new TWECO Trade bulk packaging range

- Manufactured from premium materials to exacting standards, providing longer consumable life and ease of use
- Roll marked with CW logo and size for easy product identification of Genuine Cigweld Products
- Heavy Duty Resealable Bags
- Easy to read product labeling including the Product Type, Size, Quantity and MIG Gun Style
- TWECO Trade products are packed in bulk quantities and allow more competitive buy pricing on various bulk quantities, please talk to your local CIGWELD Account Manager



FRONT END STARTER KITS & ACCESSORIES



FRONT END STARTER KIT TO SUIT TWECO® 2 MIG GUN

Suitable For:

- Transmig 175i+, 185 Ultra, 220i & 255i
- Rebel 215iC & 235iC
- WeldSkill 250
- TWECO 2 & Fusion 250 MIG Guns

Pack Contents:

- 10 x OTW14/30 Tweco Contact Tip 0.8mm
- 10 x OTW14/35 Tweco Contact Tip 0.9mm
- 2 x OTW22/50 Tweco Nozzle Adjustable 13mm
- 2 x OTW32 Tweco 2 Insulator
- 2 x OTW52 Tweco 2 Gas Diffuser
- 1 x CWPLIER MIG Plier

P/N:	Description	RRP (Exc. GST)	RRP (Inc. GST)
W4012300	Front End Starter Kit to Suit Tweco® 2 MIG Gun	\$86.36	\$95.00



TIG STARTER KIT 17/18/26

ROBUST STORAGE CASE WITH ADDITIONAL ROOM FOR MORE!

Contains:

- 3 x Ceramic Nozzles (size 6/7/8)
- 1 x 1.6mm Collet, Collet Body & 3T Tungsten
- 1 x 2.4mm Collet, Collet Body & 3T Tungsten
- 1 x 3.2mm Collet, Collet Body & 3T Tungsten
- 1 x Long Back Cap
- 1 x Short Back Cap

P/N:	Description	RRP (Exc. GST)	RRP (Inc. GST)
CT1726K1	TIG Starter Kit 17/18/26	\$48.18	\$53.00



BINZEL® COMPATIBLE FRONT END STARTER KITS TO SUIT 13 & 14 MIG GUNS

Suitable For:

- EasyWeld 130
- HandyWeld 130
- BZL-13 & 14 Series MIG Guns

P/N: W4012302 Pack Contents:

- 5 x BZT6606 Contact Tips 0.6mm
- 5 x BZT6608 Contact Tips 0.8mm
- 5 x BZT6609 Contact Tips 0.9mm
- 2 x BZN1512 Gas Nozzle (M) 12mm
- 2 x BZN1516 Gas Nozzle (L) 16mm
- 2 x BZH15 Tip Holder Left-Hand 34mm
- 2 x BZNS15 Nozzle/Diffuser Spring
- 1 x CWPLIER MIG Plier

15 & 16 MIG GUNS

Suitable For:

- EasyWeld 160
- HandyWeld 160
- BZL-15 & 16 Series MIG Guns
- Blue Venom 186/190

P/N: W4012303 Pack Contents:

- 5 x BZT6606 Contact Tips 0.6mm
- 5 x BZT6608 Contact Tips 0.8mm
- 5 x BZT6609 Contact Tips 0.9mm
- 2 x BZN1512 Gas Nozzle (M) 12mm
- 2 x BZN1516 Gas Nozzle (L) 16mm
- 2 x BZH15L Tip Holder Left-Hand 42mm
- 2 x BZNS15 Nozzle/Diffuser Spring
- 1 x CWPLIER MIG Plier

P/N:	Description	RRP (Exc. GST)	RRP (Inc. GST)
W4012302	BINZEL® compatible front end starter kit 13 and 14 Mig Guns	\$56.36	\$62.00
W4012303	BINZEL® compatible front end starter kit 15 and 16 MIG Guns	\$45.45	\$50.00



CIGWELD MIG PLIERS

MULTIFUNCTION MIG WELDING PLIERS.

Specifically designed with the avid welder in mind, these 8 function pliers are the perfect tool for any welder.

Constructed from high grade drop forged carbon steel, these new pliers feature a redesigned spring-loaded handle for better grip and easy operation.

8 functions:

- Cutting wire
- Nozzle cleaning
- Contact tip removal and tightening
- Hot nozzle removal
- Lifting and maneuvering hot welded pieces
- Cutting/trimming spring steel liner
- Long nose pliers
- Mini hammers to tap out spatter in nozzle

P/N:	Description	RRP (Exc. GST)	RRP (Inc. GST)
CWPLIER	CIGWELD MIG Pliers	\$17.27	\$19.00

PERSONAL PROTECTIVE EQUIPMENT



ARCMaster XC20

Essential level welding helmet - Comes in BLAX & Torque graphic versions.
Budget friendly price, Lightweight, Variable Shade 9-13, Adjustable sensitivity and delay controls.

- External sensitivity and delay controls
- Positive Lock-Up 3 Point Head Harness Mechanism
- Non-replaceable batteries
- Weight: 455g

SPECIFICATIONS

Viewing Area	95 x 36mm = 58.5mm ²
Arc Sensors	2
DIN Rating	Quad-1 (1/1/1/1)
Shade Range	9-13
Switching Speed	0.2ms
Harness Points	3
Analogue Controls	Yes
Ultra View	No

OptiShade Technology	No
Impact Rating	High Impact
Grinding Shade	4
Gradual Mode	No
Memory Mode	No
Power Up:	Non-replaceable batteries
Warranty	2 Years

P/N:	Description	RRP (Exc. GST)	RRP (Inc. GST)
WHAMXC120	Arcmaster XC20 Helmet - Torque	\$80.91	\$89.00
WHAMXC020	Arcmaster XC20 Helmet - BLAX	\$80.91	\$89.00



ARCMaster XC30

Choice level welding helmet - Comes in BLAX, CyberSkull & Payday graphic versions.
Budget friendly price, Lightweight, Variable Shade 9-13, External sensitivity and delay controls.

- External sensitivity and delay controls
- Solar Assist 2 x CR2450 battery
- Positive Lock-Up 3 Point Head Harness Mechanism
- Weight: 475g

SPECIFICATIONS

Viewing Area	98 x 43mm = 65mm ²
Arc Sensors	4
DIN Rating	Quad-1 (1/1/1/1)
Shade Range	9-13
Switching Speed	0.2ms
Harness Points	3
Analogue Controls	Yes
Ultra View	Yes

OptiShade Technology	No
Impact Rating	High Impact
Grinding Shade	4
Gradual Mode	No
Memory Mode	No
Power Up:	Solar Assist 2 x CR2450
Warranty	2 Years

P/N:	Description	RRP (Exc. GST)	RRP (Inc. GST)
WHAMXC230	Arcmaster XC30 Helmet - Cyberskull	\$99.09	\$109.00
WHAMXC130	Arcmaster XC30 Helmet - Payday	\$99.09	\$109.00
WHAMXC030	Arcmaster XC30 Helmet - BLAX	\$99.09	\$109.00



ARCMaster XC40

Exceed level welding helmet - Comes in BLAX & Terra graphic versions.
Bigger viewing area (73.4mm²), Easy access external controls, Ultra View.

- External sensitivity and delay controls
- Positive Lock-Up 3 Point Head Harness Mechanism
- Solar Assist 2 x CR2450 battery
- Weight: 485g

SPECIFICATIONS

Viewing Area	98 x 55mm = 73.4mm ²
Arc Sensors	4
DIN Rating	Quad-1 (1/1/1/1)
Shade Range	9-13
Switching Speed	0.2ms
Harness Points	3
Analogue Controls	Yes
Ultra View	Yes

OptiShade Technology	No
Impact Rating	High Impact
Grinding Shade	4
Gradual Mode	No
Memory Mode	No
Power Up:	Solar Assist 2 x CR2450
Warranty	2 Year

P/N:	Description	RRP (Exc. GST)	RRP (Inc. GST)
WHAMXC140	Arcmaster XC40 Helmet - Terra	\$135.45	\$149.00
WHAMXC040	Arcmaster XC40 Helmet - BLAX	\$135.45	\$149.00

ARCMASTER XC50

Prime level welding helmet - Comes in BLAX & Delta graphic versions.
Wider shade range (4, 5-8, 9-13), 4-Point comfortable harness, Extended 3-year warranty.

- Positive Lock-Up 4 Point Head Harness Mechanism
- Solar Assist 1 x CR2450 battery
- Weight: 580g



BLAX
SERIES

DELTA

ARCMASTER XC70

Supreme level welding helmet - Comes BLAX & Mayhem graphic versions.
5-Arc sensors (with OptiShade), Gradual mode, 5-Point premium harness,
Tactile external grind mode button.

- Digital Sensitivity and Delay controls
- Positive Lock-Up 5 Point Head Harness Mechanism
- Solar Assist 2 x CR2032 battery
- Weight: 620g



BLAX
SERIES

MAYHEM

SPECIFICATIONS

Viewing Area	100 x 60mm = 77.5mm ²
Arc Sensors	4
DIN Rating	Quad-1 (1/1/1/1)
Shade Range	5-8 / 9-13
Switching Speed	0.1ms
Harness Points	4
Analogue Controls	Yes
Ultra View	Yes
OptiShade Technology	No
Impact Rating	High Impact
Grinding Shade	4
Gradual Mode	No
Memory Mode	No
Power Up:	Solar Assist 1 x CR2450
Warranty	3-Years + 6 Months Extended**

P/N:	Description	RRP (Exc. GST)	RRP (Inc. GST)
WHAMXC150	Arcmaster XC50 Helmet - Delta	\$162.73	\$179.00
WHAMXC050	Arcmaster XC50 Helmet - BLAX	\$162.73	\$179.00



Experience unparalleled precision with OptiShade Technology The intelligent 5th sensor automatically adjusts shade range based on detected light transmittance from the weld environment.



Enhanced user experience with Gradual Feature Smoothly transitions from dark to light state to minimize eye fatigue and enhance the achievement of a welding job done well.

SPECIFICATIONS

Viewing Area	98 x 87mm = 92.3mm ²
Arc Sensors	5 (4+1)
DIN Rating	Quad-1 (1/1/1/1)
Shade Range	4-8 / 9-14
Switching Speed	0.1ms
Harness Points	5
Digital Controls	Yes
Ultra View	Yes
OptiShade Technology	Yes
OptiShade Sensors	User adjustable +/- 2 shades
Impact Rating	High Impact
Grinding Shade	3
Gradual Mode	Yes (Dark to Clear)
Memory Mode	Yes x 10
Power Up	Solar Assist 2 x CR2032
Warranty	3 Years + 6 months extended**

P/N:	Description	RRP (Exc. GST)	RRP (Inc. GST)
WHAMXC170	Arcmaster XC70 Helmet - Mayhem	\$262.73	\$289.00
WHAMXC070	Arcmaster XC70 Helmet - BLAX	\$262.73	\$289.00

SENTINEL™ A60

WELDING HELMET



The upgrade signature Sentinel helmet.

Huge panoramic view, ESAB OptCS re-engineered auto-darkening filter (ADF), fully adjustable Halo headgear.

SPECIFICATIONS

Viewing Area	118 x 71mm
Arc Sensors	4
DIN Rating	Quad-1 (1/1/1/1)
Shade Range	5-13
Switching Speed	.04ms
Harness	HALO™ comfort harness, infinitely adjustable
Digital/Analogue Controls	Yes
Impact Rating	High Impact
Grinding Shade	3
Memory Mode	Yes x 9
Power Up	Solar cell + 2 replaceable CR2450 lithium batteries
Warranty	3 Years (Excluding battery)

P/N:	Description	RRP (Exc. GST)	RRP (Inc. GST)
0700600860	ESAB Sentinel A60 Welding Helmet	\$544.55	\$599.00

SENTINEL™ A60

WELDING HELMET WITH ESAB PAPR

(POWERED AIR PURIFYING RESPIRATOR)



The advanced Sentinel A60 Air PAPR Kit with the EPR-X1.

Huge panoramic view, ESAB OptCS re-engineered auto-darkening filter (ADF), fully adjustable Halo headgear, Intelligent audible & Vibratory air-flow & Battery alerts.

SPECIFICATIONS

Viewing Area	118 x 71mm
Arc Sensors	4
DIN Rating	Quad-1 (1/1/1/1)
Shade Range	5-13
Switching Speed	.04ms
Harness	HALO™ comfort harness, infinitely adjustable
Digital/Analogue Controls	Yes
Impact Rating	High Impact
Grinding Shade	3
Memory Mode	Yes x 9
Power Up	Solar cell + 2 replaceable CR2450 lithium batteries
Warranty	3 Years (Excluding battery)

P/N:	Description	RRP (Exc. GST)	RRP (Inc. GST)
E700600800	ESAB Sentinel A60 Air PAPR Kit	\$1,453.64	\$1,599.00



CIGWELD recognises that you don't stay at the top as market leaders unless you continue to play to your strengths. Our strength over the past 100+ years has been to provide welding product innovation at a fair price, and we continue to honour that commitment today. Being part of the global ESAB Corporation we are leveraging economies of scale with our parent company's factories and vendors to ensure CIGWELD continues to deliver products that are well suited to the end-users needs as well as bringing new ideas and efficiencies at affordable prices.

**THE YEAR 2023 HAS SEEN A HOST OF NEW PRODUCT INTRODUCTIONS, NEXT YEAR, WE'RE INVESTING IN MORE TIME, MORE RESOURCES AND MORE INNOVATION TO DELIVER YOU
EVEN MORE IN '24!**

CIGWELD

AN **ESAB** BRAND



CIGWELD Pty Ltd An ESAB Brand 71 Gower Street, Preston VIC 3072 Australia
CUSTOMER CARE: Tel: 1300 654 674 | Intl Tel: +61 9474 7400
Email: enquiries@CIGWELD.com.au



| CIGWELD.COM.AU

In the interest of continuous improvements, CIGWELD Pty Ltd ABN 56 007 226 815 (An ESAB Brand) reserves the right to change specifications or design on any of its products without prior notice.