

CIGWELD

AN **ESAB** BRAND

AUTO DARKENING WELDING HELMETS

WeldSkill | **ProLite** | **ProPlus**



MIG

STICK

TIG

PLASMA

COMPLETE RANGE



CIGWELD WeldSkill Welding Helmets are specifically designed for the budget conscious user and offer excellent comfort & performance.

The WeldSkill Auto-Darkening helmet range is fitted with the latest auto-darkening shade lenses and is available in 8 models; one with a fixed shade 11 lens and 7 other models with a variable shade 9-13 lens. All models can be fitted with an optional CIGWELD magnification lens which magnifies the work area to substantially assist the welder in maintaining the high standards required.

The value-for-money WeldSkill Auto-Darkening helmet range provides the personal eye protection required for a solid day's welding.

MIG
STICK
TIG*



FLAMING SKULL



PINK LADY



RACER



CARBON FIBRE



TRIBAL



OZ FLAG



BLUE



BLACK
(FIXED SHADE)

REPLACEABLE BATTERIES* NEW

*Note: 454304 Black (Fixed Shade) does not have a replaceable battery or Ultra View Lens

* with only recommended for TIG welding of 60Amps & above (2 sensor).

“A great everyday welding helmet for light duty use.”

FEATURES



Auto Darkening

This welding helmet is fitted with an auto-darkening variable shade 9-13 filter lens.*



Auto Darkening

This welding helmet is fitted with an auto-darkening fixed shade 11 filter lens.*



Impact Rating

Medium Impact Rating. This welding helmet complies with the medium impact requirements outlined in AS/NZS 1337:1992.*



Ultra View Lens

(True Colour Lens) with blue light filter



High Speed Reaction Time



Battery

Batteries (replaceable) powered with solar assist for extended battery life. 2 x CR2450 Lithium Batteries.



Adjustable Sensitivity and Delay



Magnification

This welding helmet can be fitted with an optional CIGWELD magnification lens.*



Standards Compliance

This welding helmet shell complies to AS/NZS1337:1992. The auto-darkening filter lens complies to AS/NZS1338.1:1992.*



Warranty

2 Year Limited Warranty*

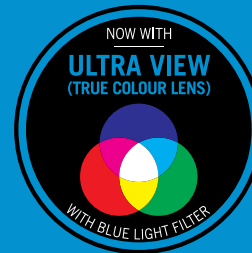
* Refer to Operating Manual for details. Download: cigweld.com.au/manuals

SPECIFICATIONS

	FIXED SHADE 11	VARIABLE SHADE 9-13
Features	Auto-darkening Filter Lens Sensitivity & delay adjustments Optional magnification lens compatible	Auto-Darkening Filter Lens - Ultra View True Colour (with Blue Light Filter) Variable shade control (9-13) Sensitivity & delay adjustments Optional magnification lens compatible Grinding mode
Filter lens dimensions	110 x 90 x 9mm	110 x 90 x 9mm
Viewing area dimensions	98 x 43mm	98 x 43mm
Reaction time	0.2ms*	0.2ms*
Sensors	2 optical sensors	2 optical sensors
Power supply	Solar cells	Solar cells
Unactivated shade level	4	4
Operating temperature	-5°C to +55°C	-5°C to +55°C
On/Off control	Automatic	Automatic
Weight	495g	530g
Replaceable Batteries	Solar Cells, Battery not Replaceable	2 x CR2450 Lithium Batteries (replaceable) and Solar Assist
Package contents	WeldSkill Auto-Darkening Welding Helmet Front Cover Lens (spare) Rear Cover Lens (spare) Operating Manual	

ORDERING INFORMATION

WeldSkill Welding Helmet Fixed Shade 11 – Black	454304
WeldSkill Welding Helmet Variable Shade 9-13 – Pink Lady	454336
WeldSkill Welding Helmet Variable Shade 9-13 – Flaming Skull	454335
WeldSkill Welding Helmet Variable Shade 9-13 – Blue	454305
WeldSkill Welding Helmet Variable Shade 9-13 – Carbon Fibre	454314
WeldSkill Welding Helmet Variable Shade 9-13 – Racer	454321
WeldSkill Welding Helmet Variable Shade 9-13 – Tribal	454322
WeldSkill Welding Helmet Variable Shade 9-13 – Oz Flag	454324
WeldSkill Auto-Darkening Filter Lens Fixed Shade 11	454306
WeldSkill Auto-Darkening Filter Lens Variable Shade 9-13	454307
WeldSkill Safety Kit	450077
Front Cover Lens WeldSkill Auto-Darkening	454308
Rear Cover Lens WeldSkill Auto-Darkening	454309
Harness Assembly WeldSkill Welding Helmet	454310
Sweat Band WeldSkill Welding Helmet	454311
Control Knob External WeldSkill	454315
Magnification Lens Frame	454320
Magnification Lens 1.50 diopter	454012
Magnification Lens 2.00 diopter	454010
Magnification Lens 2.25 diopter	454014
Magnification Lens 2.50 diopter	454011



Whether you've got your nose to the grindstone or you're striking an arc, you can trust CIGWELD's ProLite series of auto-darkening helmets to keep you focused.

You've only got two eyes, so why take any chances with flash burns. With a ProLite welding helmet, you can work in comfort and safety wherever you are – thanks to state of the art auto-darkening technology. It's all down to four sensors. Even at very low amperages, the helmet remains dark which makes it ideal for TIG work as well as more powerful stick and MIG jobs.

As with all CIGWELD products, our helmets have been designed to make your life easier. A simple switch allows you to choose between welding and grinding modes, so you're not plunged into darkness the moment you pick up your grinder. There's an optional magnification lens too, which slots in easily to make light work of more fiddly jobs.

Best of all, the ProLite range is fully compliant with Australian standards – which means you're buying from a brand you can trust.

- Ultra View True Colour Lens with Blue Light Filter allows the operator to see truer colour at their work piece while reducing the operator's visual fatigue if concentrating on an arc all day.
- Complies to Australian Standards AS/NZS 1337.1 & AS/NZS 1338.1
- 4 Sensor Auto-Darkening Filter Lens
- High Impact Rating
- Low Amperage TIG Welding Rating
- Magnification Lens Compatible
- Replaceable Batteries
- 3 Years Limited Warranty

MIG

STICK

TIG

PLASMA



MATRIX 1.0



SPIDER



CLAW



SPACE



SHADOW



HOWLING WOLF

“Whether you’re welding or plasma cutting, the ProLite range has you covered”

FEATURES



Auto Darkening

This welding helmet is fitted with an auto-darkening variable shade 9-13 filter lens.*



4 Sensor

Auto-Darkening filter lens is equipped with four arc sensors suitable for all welding applications including low amperage TIG.



High Impact Rating

This welding helmet complies with the high impact requirements outlined in AS/NZS 1337.1.



Viewing Area 98 x 55mm



Ultra View Lens

(True Colour Lens) with blue light filter



High Speed Reaction Time



Adjustable Sensitivity and Delay



Battery

Batteries (replaceable) powered with solar assist for extended battery life. 2 x CR2450 Lithium Batteries.



TIG

TIG Rating low amperage rating of 5 amps and above DC & AC & Pulse TIG Welding.



Plasma Cutting

Suitable for Plasma Cutting applications Shade 9, 80A and above.



Welding & Grinding Modes

Grind State Shade 4.



OPTIONAL

Magnification

This welding helmet can be fitted with an optional CIGWELD magnification lens.*



AS

Compliance

This welding helmet shell complies to AS/NZS 1337.1. The auto-darkening filter lens complies to AS/NZS 1338.1.



3
YEAR*

Warranty

3 Year Limited Warranty*

* Refer to Operating Manual for details.
Download: cigweld.com.au/manuals

SPECIFICATIONS

Viewing Area	98 x 55mm
Cartridge Size	120 x 100 x 18 mm
Number of Sensors	4 Optical Sensors
Light State	Shade 4
Grind State	Shade 4
Arc Welding Shades	Shade 9 to 13
Plasma Cutting Shades	Shade 9 to 13
Power On/Off	Automatic
Sensitivity Control	Low to High
UV/IR Protection	All Shades Provide Continuous UV/IR Protection
Power Supplies	Solar cell Replaceable 2 x CR2450 Lithium Batteries (Included)
Modes	Welding & Grinding
Delay Time (Dark to Light)	Min (0.3 sec) - Max (0.9 sec)
Operating Temperature	-5°C to +55°C
Storing Temperature	-20°C to +70°C
Helmet Material	High Impact Resistant Nylon
Total Weight	470g
Applications:	MIG (GMAW/FCAW), Stick (MMAW), TIG (GTAW), Plasma Arc Cutting (PAC), Plasma Arc Welding (PAW), Carbon Arc Gouging-Air (CAG-A).
Package contents	ProLite Auto-Darkening Welding Helmet Helmet Bag, Front Cover Lenses (spare x 2) Rear Cover Lenses (spare x 2), Sweatband (spare x 1) Operating Manual

ORDERING INFORMATION

ProLite Auto-Darkening Welding Helmet - Space	454332
ProLite Auto-Darkening Welding Helmet - Claw	454333
ProLite Auto-Darkening Welding Helmet - Shadow	454334
ProLite Auto-Darkening Welding Helmet - Howling Wolf	454342
ProLite Auto-Darkening Welding Helmet - Redback Spider	454343
ProLite Auto-Darkening Welding Helmet - Matrix 1.0	454344
Sweatband	454326
Harness Assembly (including Sweatband)	454327
Rear Cover Lens	454328
Auto-Darkening Filter Lens	454325
Front Cover Lens	454329
Control Knob	454330
Magnification Lens 1.50 Diopter	454012
Magnification Lens 2.00 Diopter	454010
Magnification Lens 2.25 Diopter	454014
Magnification Lens 2.50 Diopter	454011



Enhance your performance with the ProPlus Welding Helmet.

When the focus of your day is a white hot point of molten metal, you want to make sure that focus is at your control. The CIGWELD ProPlus Digital Auto-Darkening Welding Helmet has exceptional response inbuilt to the 4 sensor auto darkening filter lens to ensure there is no disruption between welding jobs.

Move between welding, cutting and grinding without distraction- the helmet reaction time is 1/25,000th of a second. The low amperage TIG rating of 2 amps and above supports even the most subtle welding applications, so you can control the arc while your helmet intelligently controls the visibility.

This feature packed welding helmet incorporates all the features you want and develops them to react intuitively to your working style. The digital LCD display delivers a discreet feed of the settings with a manual option for when you require total control. And the precision designed viewing area provides the optimal dimensions to hone in on the task without fringe distractions.

You'll also love the endless endurance of the solar assisted battery life in this high performance helmet when the ergonomic 4 point harness with cushion support that moulds to your head.

In addition to above features, optional CIGWELD magnification lenses can further extend the vision enhancement of the ProPlus Welding Helmet. The seamless environment of this cutting edge mask will hone your day into laser point of focus. Why not find out how efficient you can be?

MIG
STICK
TIG
PLASMA

- Complies to Australian Standards AS/NZS 1337.1 & AS/NZS 1338.1
- 4 Sensor Auto-Darkening Filter Lens
- High Impact Rating
- Low Amperage TIG Welding Rating
- Digital Display and Controls
- Reaction Time 1/25,000 sec
- Magnification Lens Compatible
- Replaceable Batteries
- 2 Years Limited Warranty



BARBED WIRE



BLUE



WEB



PRO RACER

"If you're a serious welder, you need a serious welding helmet"

FEATURES



Auto Darkening

This welding helmet is fitted with an auto-darkening variable shade 5-13 filter lens.*



High Speed Reaction Time



Welding, Cutting & Grinding Modes

Grind State Shade 4.
(Refer to specifications table for list of applications).



4 Sensor

Auto-Darkening filter lens is equipped with four arc sensors suitable for all welding applications including low amperage TIG.



Adjustable Sensitivity and Delay



OPTIONAL

Magnification

This welding helmet can be fitted with an optional CIGWELD magnification lens.*



Digital Display

The auto-darkening filter lens features a digital led display and controls.



Battery

Batteries (replaceable) powered with solar assist for extended battery life. Auto-off after 30mins when inactive.



AS

Compliance

This welding helmet shell complies to AS/ NZS 1337.1. The auto-darkening filter lens complies to AS/NZS 1338.1.



High Impact Rating

This welding helmet complies with the high impact requirements outlined in AS/NZS 1337.1.



TIG

TIG Rating low amperage rating of 5 amps and above DC & AC & Pulse TIG Welding.



2 YEARS*

Warranty

2 Year Limited Warranty.*



Viewing Area 97 x 62 mm



Plasma Cutting

Suitable for Plasma Cutting applications Shade 8, 60A and above.

* Refer to Operating Manual for details.
Download: cigweld.com.au/manuals

SPECIFICATIONS

Optical Class:	1 / 1 / 1 / 2
Viewing Area:	97 x 62 mm
Cartridge Size:	133 x 114 x 9 mm
Number of Sensors:	4 Optical Sensors
Light State:	Shade No. 4
Grind State:	Shade No. 4
Oxy/Fuel Welding and Cutting Shades:	Shade No. 5 to No. 8 Digitally Controlled
Arc Welding Shades:	Shade No. 8 to No. 13 Digitally Controlled
Plasma Cutting Shades:	Shade No. 8 to No. 13 Digitally Controlled
Shade Control:	Internal, Variable Shade Digitally Controlled
Power On/Off:	Manual-On, Auto-Off
Sensitivity Control:	Low No. 0 to High No. 10 Digitally Controlled
UV/IR Protection:	All Shades Provide Continuous UV/IR Protection
Power Supplies:	Solar cell Replaceable 2 x CR2450 Lithium Batteries (Included)
Switching Time (Light to Dark):	0.00004 (1/25,000) Seconds
Modes:	Welding, Cutting & Grinding
Delay Time (Dark to Light):	0.1 ~ 1.0s Digitally Controlled
Low Amperage TIG Rated:	≥ 2 amps (DC); ≥ 2 amps (AC)
Operating Temperature:	-10°C ~ +55°C
Storing Temperature:	-20°C ~ +70°C
Helmet Material:	High Impact Resistant Nylon
Total Weight:	500g
Applications:	MIG (GMAW/FCAW), Stick (MMAW), TIG (GTAW), Plasma Arc Cutting (PAC), Plasma Arc Welding (PAW), Carbon Arc Gouging-Air (CAG-A), Oxy/Fuel Gas Welding (OFW), Oxygen Cutting (OC), Grinding

ORDERING INFORMATION

ProPlus Digital Auto-Darkening Welding Helmet – Blue	454350
ProPlus Digital Auto-Darkening Welding Helmet – Web	454351
ProPlus Digital Auto-Darkening Welding Helmet – Barbed Wire	454352
ProPlus Digital Auto-Darkening Welding Helmet – Pro Racer	454353
Digital Auto-Darkening Filter Lens	454354
Front Cover Lens Seal	454355
Front Cover Lens	454356
Rear Cover Lens	454357
Harness Assembly	454358
Sweatband	454359
Magnification Lens 1.50 Diopter	454012
Magnification Lens 2.00 Diopter	454010
Magnification Lens 2.25 Diopter	454014
Magnification Lens 2.50 Diopter	454011

Hiderok

LIFT FRONT WELDING HELMET



The ORIGINAL Hiderok™ welding helmet first developed by CIGWELD and still going strong.

Hiderok™ welding helmets are moulded to offer a lightweight construction, strength, flexibility and heat resistance while still providing the wearer with the comfort and balance necessary for a hard day's work.

Shade 11

Part No 453833 or 453833IND

MIG

STICK

TIG

Visor

SHADE 5 WITH BROWGUARD



Great protection for Cutting and Gouging.

Faceshield visor shade 5 complete certified to AS1337, specifically designed for Gas cutting & gouging & light plasma cutting & gouging with full face protection. (Also available in a clear visor version).

Part No 454638

CUTTING

GOUGING

WeldSkill Essential Welding Helmet - Auto-Darkening



The new WeldSkill Essential Helmet is the perfect entry level helmet for those DIY welders on a budget who don't want to sacrifice on safety.

- 2 Sensor Auto-darkening variable shade 9-13 filter lens.
- 94mm x 36mm viewing area.
- Medium Impact Rating.
- Fast Reaction Time.
- Adjustable Sensitivity and Delay.
- Complies to AS/NZS1337:2010 and AS/NZS1338.1:2012.
- 1 Year Limited Warranty*.

* Refer to Operational Manual

Part No 454337

MIG

STICK

TIG

HELMET SELECTION

SHADE	VIEWS AREA	WEIGHT	PROCESS	DIGITAL	IMPACT RATING	REPLACEABLE BATTERIES	WARRANTY
-------	---------------	--------	---------	---------	------------------	--------------------------	----------

WELDSKILL

9-13	98 x 43mm	FIXED SHADE 495g SHADE 9-13 530g	MIG TIG* STICK	N/A	MED	YES	2 YEARS
------	-----------	---	----------------------	-----	-----	-----	------------

PROLITE

9-13	98 x 55mm	470g	MIG TIG STICK PLASMA	N/A	HIGH	YES	3 YEARS
------	-----------	------	-------------------------------	-----	------	-----	------------

PROPLUS

5-13	97 x 62mm	500g	MIG TIG STICK PLASMA	DIG	HIGH	YES	2 YEARS
------	-----------	------	-------------------------------	-----	------	-----	------------

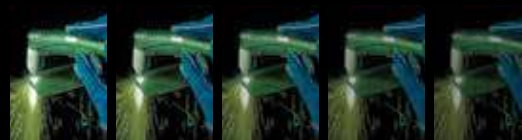
RECOMMENDED SHADES

Arc Welding Shades



Shade #8 Shade #9 Shade #10 Shade #11 Shade #12 Shade #13

Plasma Cutting Shades



Shade #5 Shade #6 Shade #7 Shade #8 Shade #9

Oxy/Fuel Welding and Cutting Shades



Shade #5